

CERTIFIED CORNER RECORDATION

Corner SEC. COR. S.26, 27, 34, 35

T. 33N. R. 34W., PMM

LINCOLN County

RECORD:

G.L.O., unknown

(1967), B.L.M. remonumentation, found 15" x 10" x 5" firmly set granite stone with 1 groove on the S. and 2 grooves on the E. faces, and witnessed by the remains of the original SW bearing tree. Set an Iron post, 30" long 2 1/2" diam., 24" in the ground with a brass cap.

(1993) Corner Recordation, found a 3 1/4" B.L.M. brass cap

(1995) Corner Recordation, found a 2 1/2" Iron pipe 2" above the ground, firmly set, with a 2 1/2" brass cap.

FOUND:

A 3 1/4" B.L.M. brass cap on a 2 1/2" Iron pipe marked as shown below, from which were found the following references:

A 16" Cedar tree with visible scribing and BT tag bears, N59° E., 35.4',

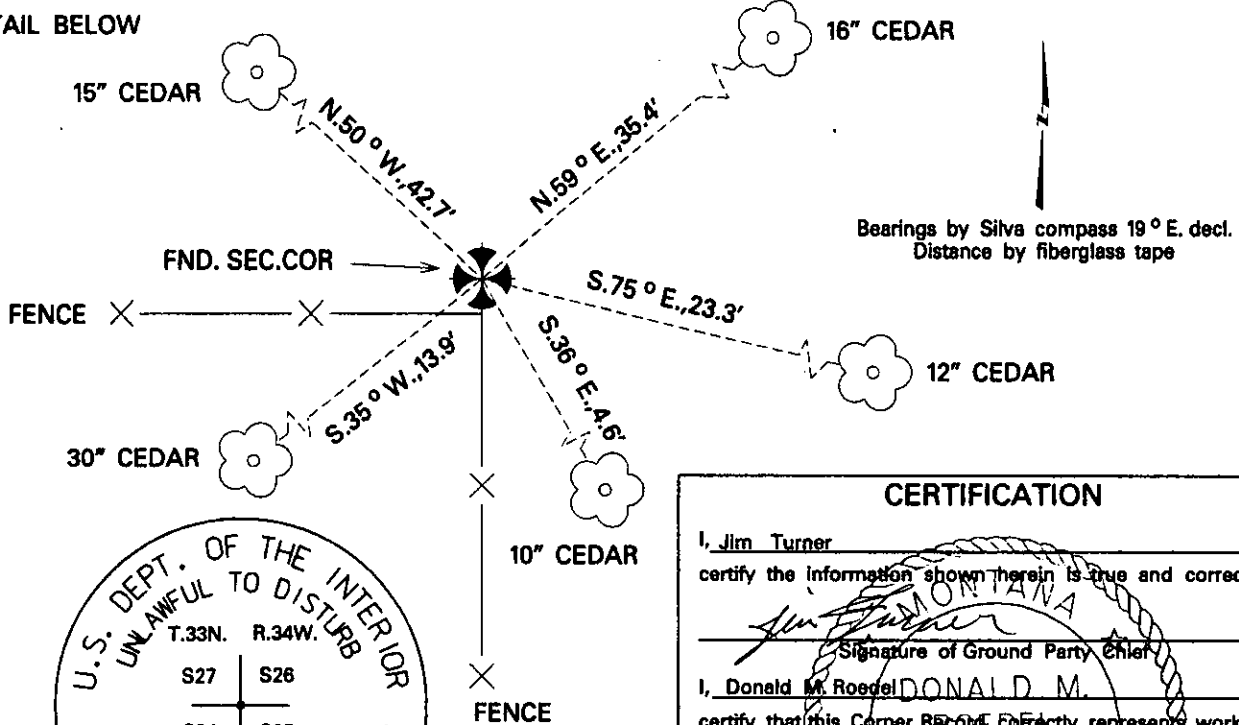
A 12" Cedar tree with visible scribing and a BT tag bears, S.75° E., 23.3',

A 10" Cedar tree with a location tag bears, S.36° E., 4.6'.

A 30" Cedar tree with visible scribes in a well healed blaze and with a BT tag bears, S.35° W., 13.9',

A 15" Cedar tree with visible scribing and BT tag bears N.50° W., 42.7',

SEE DETAIL BELOW



SKETCH OF CORNER

CERTIFICATION

I, Jim Turner

certify the information shown herein is true and correct.

Signature of Ground Party Chief

I, Donald M. Roedel

certify that this Corner Recordation correctly represents work performed by me or under my direction in compliance with the "Corner Recordation Act" (70-22-101, et seq., MCA)

Signature of Surveyor & Seal

Date: 10-29-02

Reg. No. 10999LS

Employer: MDT

Office of Clerk and Recorder, County of LINCOLN. This "corner

record" was filed for record on November 25 2002

was noted on the cross-index plat, and is assigned Page No. 10570, in Book No. Coal M. Commis. Co.

County Official DR

Sec. 35

• — Corner this sheet