

CERTIFIED CORNER RECORDATION

Corner: #5 HES 898 Twp.33N., R.34 W., P.M.M.

Lincoln County

Per HES 898 field notes 1920

Record :

Place a small stone marked with a cross (X) under a slate stone 24X6X6 inches 14 inches in the ground marked 5 HES 898 on SW face and a cross (X) on top for the exact corner point.

From Which:

A cross (X) on a Fir tree 5 inches diameter bears S48° 04' W 48 LKS distance.

A cross (X) on a Fir tree 1 inches diameter bears S20° 34" E 91 LKS distance each blazed and scribed HES 898 BT.

Raised a mound of stone 4 ft Base 2 ft high SW of corner.

Found Evidence :

Original stone and mound of stones with original 5 inch Fir (now 15 inches DBH) SW of corner scribing not legible.

Perpetuation :

I established the following two bearing trees for corner #5.

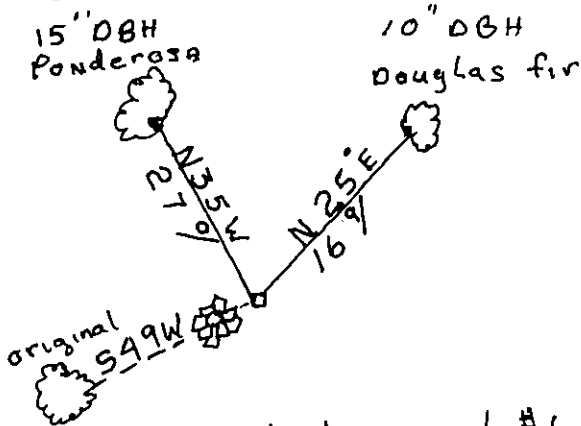
From which:

A 15 inch DBH Ponderosa Pine scribed #5 HES 898 BT Bears N 35° W 27 feet distance.

A 10 inch DBH Douglas Fir scribed #5 HES 898 BT Bears N 25° E 16.9 feet distance.

Painted 6 inch Wide Bands and attached bearing tree signs to both trees.

Magnetic Declination 18 °E



original



#5 HES 898 BT

#5 HES 898 BT

CERTIFICATION

I, George Clark

certify the information shown herein is true and correct

Signature of Ground Party Chief

I, Ken Davis

certify that this corner record correctly represents work performed by Me or under my direction in compliance with the "Corner Recordation Act"

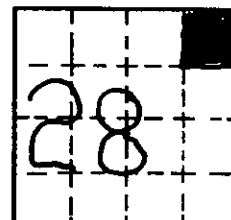
(10-22-01 Ed. 1, Inc. A)

Signature of Surveyor & Seal

Date

Employer, Davis Surveying, Inc.

Section



Sketch of Corner

Office of Clerk and Recorder, County of Lincoln

This "corner record" was filed for record on 1-24-01

was noted on the cross-index plat and is assigned page No. 10494

in book No. Total M. Summary by SUB

County Official

Cross Index No. 5 HES 898 Twp. 33 N., R. 34 W., P.M.M.

• THIS CORNER