

CERTIFIED CORNER RECORDATION

Corner NW-SE 1/64 S24 T. 33 N., R. 34 W., P.M.M. Lincoln County

Record :

1970 Section Subdivision by Ninneman Engineering (Book 1 Page 209 Certified Corner Recordation, Lincoln County Records). No monumentation.

Found Evidence :

None

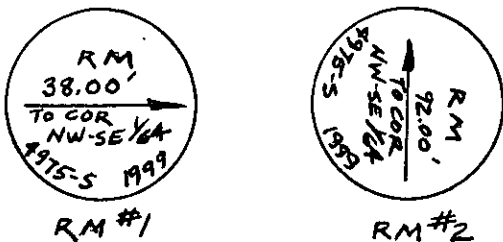
Perpetuation :

The position for the NW-SE 1/64 cor. for Sec. 24 was determined from a closed traverse survey of the SE 1/4 of Sec. 24 by Davis Surveying, Inc. during February of 1999. At the computed position, set a 6 inch long standard railroad spike flush with the paved surface of Pine Creek Road, with an "X" on top, from which:

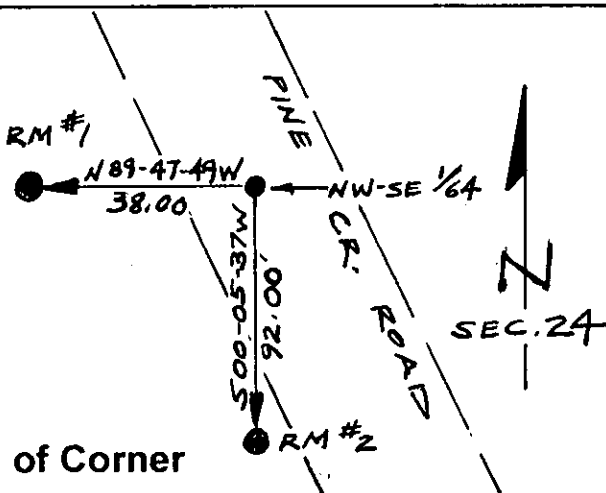
A 5/8 in. diam. steel rebar 24 ins. long, 22 ins. in the ground with a 3 1/4 in. diam. alum. cap, marked as shown below, bears N 89°47'49" W, 38.00 ft. dist.

A 5/8 in. diam. steel rebar 24 ins. long, 22 ins. in the ground with a 3 1/4 in. diam. alum. cap, marked as shown below, bears S 00°05'37" W, 92.00 ft. dist.

Set 6 ft. long steel posts with Land Survey Monument and Property Line decals along side both reference monuments set.



Magnetic Declination: 18° E.



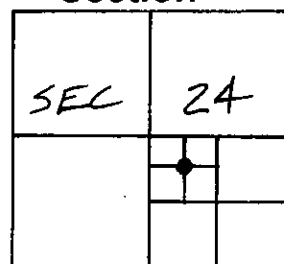
Sketch of Corner

CERTIFICATION

I, John Damon
 certify the information shown herein is true and correct
 Signature of Ground Party Chief
 I, Ken E. Davis
 certify that this Corner Record correctly represents work performed by
 me or under my direction in compliance with the "Corner Recordation Act"
 (78-22-101, et seq. M.C.A.)
 Signature of Surveyor & Seal
 Date 5/15/99 Reg. No. 4975-S
 Employer: Davis Surveying, Inc.

Office of Clerk and Recorder, County of Lincoln
 This "corner record" was filed for record on May 24, 1999
 was noted on the cross-index plat and is assigned page No. 10343
 in book No. Book M. Cumming By RLB
 County Official

Section



Cross Index No. NW-SE 1/64 S24 T. 33 N., R. 34 W., PMM • THIS CORNER