

# CERTIFIED CORNER RECORDATION

Corner C-E-SE 1/64 S24 T. 33 N., R. 34 W., P.M.M. Lincoln County

Record :

1970 Section Subdivision by Ninneman Engineering (Book 1 Page 209 Certified Corner Recordation, Lincoln County Records). No monumentation.

Found Evidence :

None

Perpetuation :

The position for the C-E-SE 1/64 cor. for Sec. 24 was determined from a closed traverse survey of the SE 1/4 of Sec. 24 by Davis Surveying, Inc. during February of 1999. At the computed position, set a 5/8 inch diam. steel rebar 24 ins. long, 22 ins. in the ground, with a 3 1/4 inch diam. alum. cap marked as shown below, from which:

A Western Tamarack 12 1/2 ins. diam. bears N. 23° E., 19.80 ft. dist., scribed (C-E-SE 1/64 S24 BT).

A Western Tamarack 15 ins. diam. bears S. 61° E., 21.20 ft. dist., scribed (C-E-SE 1/64 S24 BT).

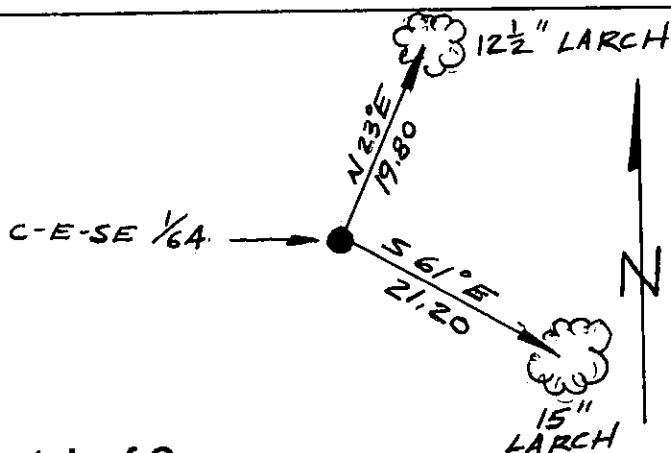
Painted 6 inch wide bands and scribed faces red.

Attached Bearing Tree and Land Survey Monument signs to both trees.

Set a 6 ft. long steel post with Land Survey Monument and Property Line decals 6.00 ft. W. of set monument on line.



Magnetic Declination: 18° E.



Sketch of Corner

## CERTIFICATION

I, John Damon

certify the information shown herein is true and correct

Signature of Ground Party Chief

I, Ken E. Davis

certify that this Corner Record correctly represents work performed by me or under my direction in compliance with the "Corner Recordation Act"

(78-22-101, et seq., M.C.A.)

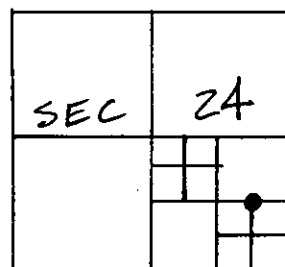
Signature of Surveyor & Seal

Date: 2/2/99

Reg. No. 4975-S

Employer: Davis Surveying, Inc.

## Section



Office of Clerk and Recorder, County of Lincoln

This "corner record" was filed for record on May 24, 1999

was noted on the cross-index plat and is assigned page No. 10342

in book No. Coral M. Cumming R, P, B

County Official

Cross Index No. C-E-SE 1/64 S24 T. 33 N., R. 34 W., PMM • THIS CORNER