

# CERTIFIED CORNER RECORDATION

Corner S-S 1/64 S24/S19 T. 33 N., R. 34 W., P.M.M. Lincoln County

Record :

1970 Section Subdivision by Ninneman Engineering (Book 1 Page 209 Certified Corner Recordation, Lincoln County Records). No monumentation.

Found Evidence :

None

Perpetuation :

The position for the S-S 1/64 cor. for Secs. 19 and 24 was determined from a closed traverse survey of the SE 1/4 of Sec. 24 by Davis Surveying, Inc. during February of 1999. At the computed position, set a 5/8 inch diam. steel rebar 24 ins. long, 22 ins. in the ground, with a 3 1/4 inch diam. alum. cap marked as shown below, from which:

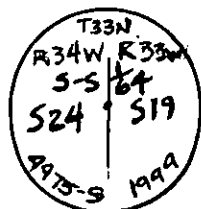
A Western Tamarack 5 1/2 ins. diam. bears N. 64° W., 14.70 ft. dist., scribed (S-S 1/64 S24 BT).

A Western Tamarack 5 1/2 ins. diam. bears N. 56° E., 12.40 ft. dist., scribed (S-S 1/64 S19 BT).

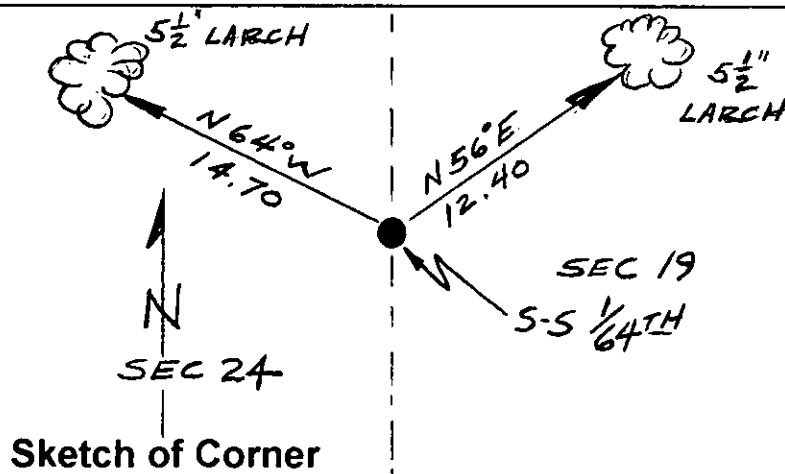
Painted 6 inch wide bands and scribed faces red.

Attached Bearing Tree and Land Survey Monument signs to both trees.

Set a 6 ft. long steel post with Land Survey Monument and Property Line decals 3 ft. W. of set monument on line.



Magnetic Declination: 18° E.



Sketch of Corner

## CERTIFICATION

I, John Damon

certify the information shown herein is true and correct

Signature of Ground Party Chief

I, Ken E. Davis

certify that this Corner Record correctly represents work performed by me or under my direction in compliance with the "Corner Recordation Act" (70-22-101, et seq., M.C.A.)

Signature of Surveyor & Seal

Date 5/12/99 Reg. No. 4975-S

Employer: Davis Surveying, Inc.

Office of Clerk and Recorder, County of Lincoln

This "corner record" was filed for record on May 24, 1999  
was noted on the cross-index plat and is assigned page No. 10341  
in book No. Coral M. Cumming By RLB

County Official

## Section

SEC	24

Cross Index No. S-S 1/64 S24/S19 T. 33 N., R. 34 W., PMM • THIS CORNER