

# CERTIFIED CORNER RECORDATION

Corner 1/4 S24/S19 T. 33 N., R. 34 W., P.M.M. Lincoln County

## Record :

1903 GLO survey by Allen B. Benedict establishing the Lake Creek Guide Meridian

"Set a Limestone, 12x10x6 ins., 8 ins. in the ground, for 1/4 sec. cor. marked 1/4 on W. face, from which:

A fir, 10 ins. diam., bears S. 34° E., 32 lks. dist. marked 1/4 S. 19 BT.

A tamarack, 28 ins. diam., bears N. 70°30' W., 20 lks. dist. marked 1/4 S. 24 BT."

1970 Section Subdivision by Ninneman Engineering (Book 1 Page 209 Certified Corner Recordation, Lincoln County Records)

"Original East 1/4 Corner fell in gravel pit and was destroyed. We set a steel rod on a true line between the southeast and northeast corners at midpoint from which:

A 12" Fir bears N 44°22' E 138.90 feet.

A 12" Pine bears S 33°48'30" E 161.70 feet.

Both scribed and posted.

## Found Evidence :

The East 1/4 sec. corner for Sec. 24 falls in an active gravel pit. No steel rod monument from the Ninneman survey was recovered.

A Ponderosa Pine, 16 1/4 in. diam., bears S. 33° E., 161.70 ft. dist., scribed (1/4 BT).

A Douglas Fir, 14 in. diam., bears N. 44° E., 158.90 ft. dist. (record N 44°22' E., 138.90 ft.) Scribed (1/4 BT).

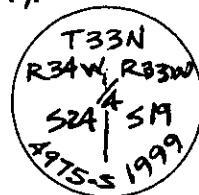
## Perpetuation :

The position for the 1/4 sec. cor. of Secs. 19 and 24 was determined from the Bearing Trees from the 1970 Ninneman Certified Corner Recordation. At the distance distance position, set a 2 1/2 in. diam. alum. pipe, 30 ins. long, 26 ins. in the ground, with a 3 1/4 inch diam. alum. cap marked as shown below, from which:

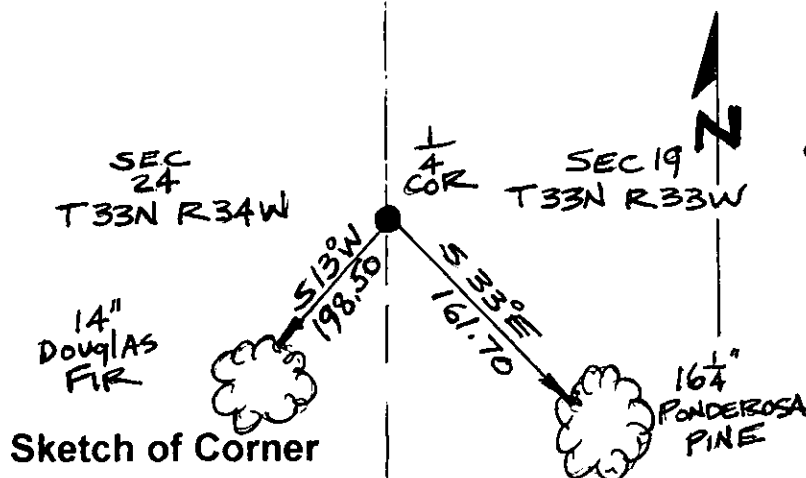
A Douglas Fir 14 ins. diam. bears S. 13° W., 198.50 ft. dist., scribed (1/4 S24 BT).

Painted 6 inch wide bands and scribed faces red.

Attached Bearing Tree and Land Survey monument signs to both trees.



Magnetic Declination: 18° E.



## CERTIFICATION

I, John Damon

certify the information shown herein is true and correct

Signature of Ground Party Chief  
Ken E. Davis

certify that this Corner Record correctly represents work performed by me or under my direction in compliance with the "Corner Recordation Act"

Signature of Surveyor & Seal  
Ken E. Davis

Date: 5/15/99 Reg. No. 4975-S

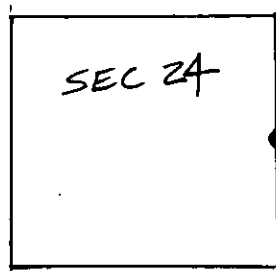
Employer: Davis Surveying, Inc.

Office of Clerk and Recorder, County of Lincoln

This "corner record" was filed for record on May 24, 1999  
was noted on the cross-index plat and is assigned page No. 10340  
in book No. Coral M. Cumming B, PEB

County Official

## Section



Cross Index No. 1/4 S24/S19 T. 33 N., R. 34 W., PMM

• THIS CORNER