

CERTIFIED CORNER RECORDATION

Corner C-W-SE 1/64 S24 T. 33 N., R. 34 W., P.M.M. Lincoln County

Record :

1970 Section Subdivision by Ninneman Engineering (Book 1 Page 209 Certified Corner Recordation, Lincoln County Records). No monumentation.

Found Evidence :

None

Perpetuation :

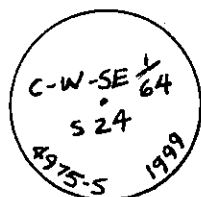
The position for the C-W-SE 1/64 cor. for Sec. 24 was determined from a closed traverse survey of the SE 1/4 of Sec. 24 by Davis Surveying, Inc. during February of 1999. At the computed position, set a 5/8 inch diam. steel rebar 24 ins. long, 22 ins. in the ground, with a 3 1/4 inch diam. alum. cap marked as shown below, from which:

A Lodgepole Pine 3 3/4 ins. diam. bears S. 10° W., 15.20 ft. dist., scribed ("X" BT).
A Lodgepole Pine 4 1/2 ins. diam. bears S. 30° E., 18.30 ft. dist., scribed ("X" BT).

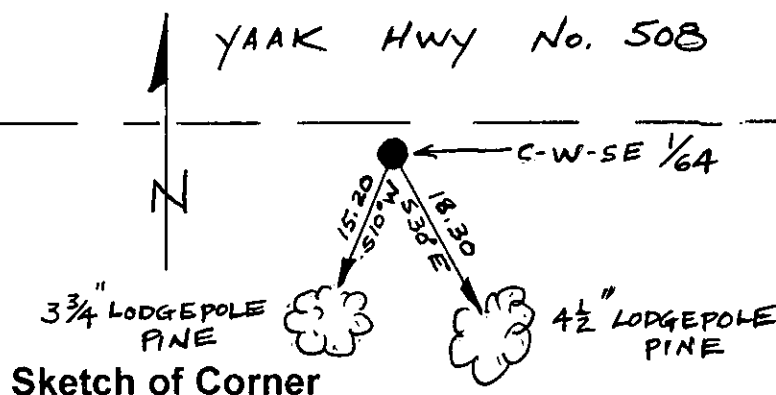
Painted 6 inch wide bands and scribed faces red.

Attached Bearing Tree and Land Survey Monument signs to both trees.

Set a 6 ft. long steel post with Land Survey Monument and Property Line decals 5.00 ft. E. of set monument on line.



Magnetic Declination: 18° E.



CERTIFICATION

I, John Damon

certify the information shown herein is true and correct

John Damon
Signature of Ground Party Chief

I, Ken E. Davis

certify that this Corner Record correctly represents work performed by me or under my direction in compliance with the "Corner Recordation Act"

(70-22-101, et seq., M.C.A.)

Ken E. Davis

Signature of Surveyor & Seal

Date: 4/5/99 Reg. No. 4975-S

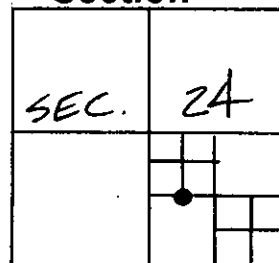
Employer: Davis Surveying, Inc.

Office of Clerk and Recorder, County of Lincoln

This "corner record" was filed for record on May 24, 1999
was noted on the cross-index plat and is assigned page No. 10333
in book No. Coral M. Cummings By D.B.

County Official

Section



Cross Index No. C-W-SE 1/64 S24 T. 33 N., R. 34 W., PMM • THIS CORNER