

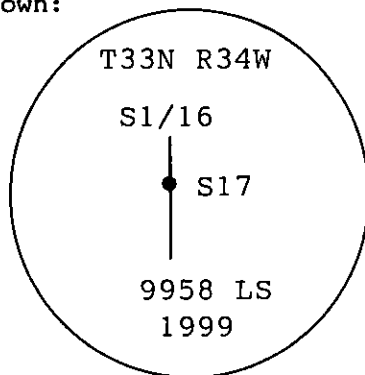
## INSTRUCTIONS

1. Original and/or subsequent record used to evaluate the corner position.
2. Description of evidence found, not discrepancies in the record, state method of establishing lost or obliterated corners.
3. Description of monument and accessories set to perpetuate the corner position.
4. Sketch of corner, show all pertinent data which can best be shown in a sketch example, corner marking, topography ties, position of accessories, etc.
5. Certification must be signed and sealed by Land Surveyor registered in the State of Montana.
6. Fill in Cross Index & Section Diagram at bottom of sheet.

## CERTIFIED CORNER RECORDATION

Corner S1/16 Sec 17- west line T. 33N R. 34W P.M.M. Lincoln County

- 1) No records found at Lincoln County Courthouse.
- 2) No evidence found on the ground.
- 3) At the corner position as determined by survey, set a 5/8"x 30" rebar, with a 3/4" aluminum cap, marked as shown:



Accessories are as follows:

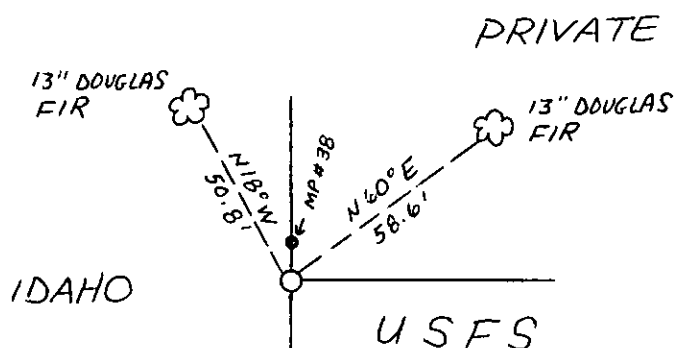
State Boundary Post #38 bears North, 7.16'. Two existing bearing trees for State Boundary Post #38 are used here as accessories to the S1/16 even though the trees as scribed clearly reference State Boundary Post #38.

A 13" Douglas Fir, bears N60°E, 58.6' distant, scribed MONT P38 BT.  
A 13" Douglas Fir, bears N18°W, 50.8' distant, scribed IDAHO P38 BT.

Blazes and scribing were painted red. Bearing tree tags and Land Survey Monument signs were attached to trees. A 6' steel post with Land Survey Monument and Forest Service Property Boundary decals attached was placed 2' east of monument.

Note:

Original scribing and scribing scars are oriented to the State Boundary Post. Bearing tree tags are oriented to the 5/8" rebar and aluminum cap.



SKETCH OF CORNER

## CERTIFICATION

I, Kevin Todd

certify the information shown herein is true and correct.

Kevin Todd  
Signature Ground Party Chief

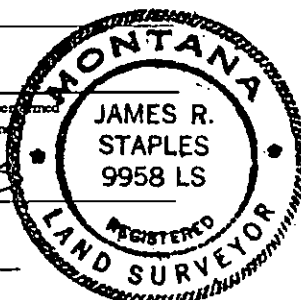
I, James R. Staples

certify that this corner Record correctly represents work performed by me or under my direction in compliance with the "Corner Recordation Act" (70-22-101, et seq., M.C.A.)

James R. Staples  
Signature of Surveyor & Seal

Date: 5-3-99 Reg. No. 9958

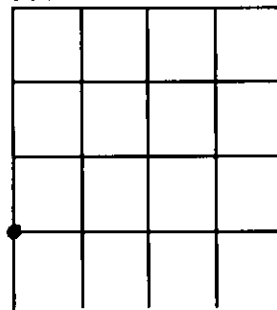
Employer: J.R.S. Surveying, Inc.



Office of Clerk and Recorder, County of Lincoln. This "corner record" was filed for record on May 3, 1999 was noted on the cross-index plat and is assigned page No.      in book No. 10333

Coral M. Cummings  
County Official

Sec. 17



Cross Index No. M-5 T. 33N R. 34W PMM