

INSTRUCTIONS

1. Original and/or subsequent record used to evaluate the corner position.
2. Description of evidence found, not discrepancies in the record, state method of establishing lost or obliterated corners.
3. Description of monument and accessories set to perpetuate the corner position.
4. Sketch of corner, show all pertinent data which can best be shown in a sketch example, corner marking, topography ties, position of accessories, etc.
5. Certification must be signed and sealed by Land Surveyor registered in the State of Montana.
6. Fill in Cross Index & Section Diagram at bottom of sheet.

CERTIFIED CORNER RECORDATION

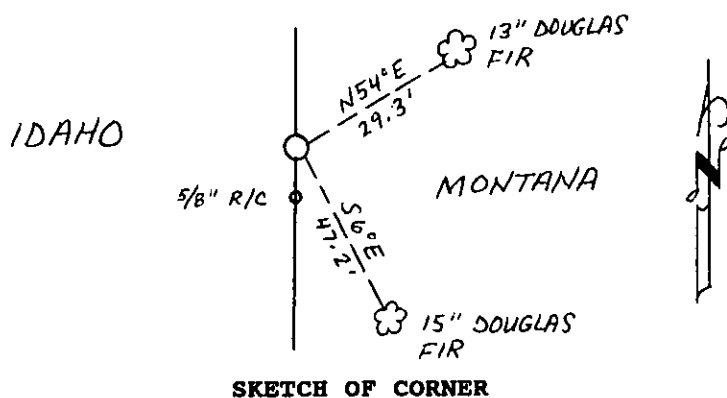
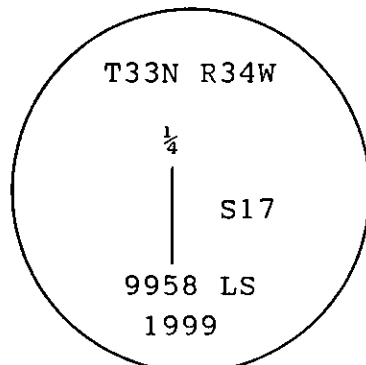
Corner W $\frac{1}{4}$ Cor Sec 17 T. 33N R. 34W P.M.M. Lincoln County

- 1) Corner not set during original GLO survey.
1980- Corner monument by JHN- 4661S. Set a 5/8"x 24" steel rod with yellow cap stamped J.H.N. 4661S. 8" Fir bears N31°33'E, 41.8'. 10" Fir bears S14°40'E, 14.1'. Both posted and scribed W $\frac{1}{4}$ BT.
- 2) Found a 5/8" rebar and plastic cap- JHN 4661S per record.
- 3) Set a standard Forest Service aluminum monument, marked as shown below, 24" in the ground, from which:

An existing 13" Douglas Fir bearing tree, with scribing scar healed over, bears N54°E, 29.3'.

An existing 15" Douglas Fir bearing tree, with scribing scar healed over, bears S 6°E, 47.2'.

New bearing tree tags and Land Survey Monument signs were attached to trees. Blazes and scribing painted red. A 6' steel post with a Land Survey Monument decal attached was placed 2' south of monument. The found rebar and plastic cap bears South, 17.2 feet.



CERTIFICATION

I, Kevin Todd

certify the information shown herein is true and correct.

Kevin A. Todd
Signature Ground Party Chief

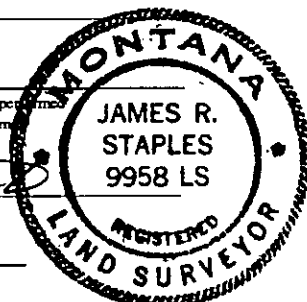
I, James R. Staples

certify that this corner Record correctly represents work performed by me or under my direction in compliance with the "Corner Recordation Act" (70-22-101, et seq., M.C.A.)

James R. Staples
Signature of Surveyor & Seal

Date: 5-3-99 Reg. No. 9958

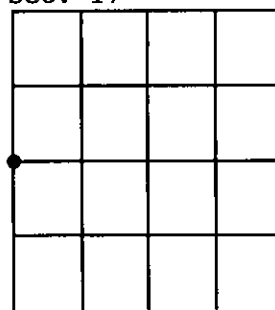
Employer: J.R.S. Surveying, Inc.



Office of Clerk and Recorder, County of Lincoln. This "corner record" was filed for record on May 3, 1999 was noted on the cross-index plat and is assigned page No. in book No. 10330

Coral M. Cumming-Byrnes
County Official

Sec. 17



Cross Index No. L-5 T. 33N R. 34W PMM