

INSTRUCTIONS

1. Original and/or subsequent record used to evaluate the corner position.
2. Description of evidence found, not discrepancies in the record, state method of establishing lost or obliterated corners.
3. Description of monument and accessories set to perpetuate the corner position.
4. Sketch of corner, show all pertinent data which can best be shown in a sketch example, corner marking, topography ties, position of accessories, etc.
5. Certification must be signed and sealed by Land Surveyor registered in the State of Montana.
6. Fill in Cross Index & Section Diagram at bottom of sheet.

CERTIFIED CORNER RECORDATION

Corner 1/4 Cor Secs 8 & 17 T. 33N R. 34W P.M.M. Lincoln County

1) Original Record- GLO 1903

Set a Tamarack post, 3' long, 4" square, 24" in the ground for 1/4 Section Corner, marked 1/4 S8 on North, and 17 on South faces, from which:

A Pine, 6" diameter bears S7°15'W, 24 links (15.84').

A Tamarack, 5" diameter, bears N17°W, 37 links (24.42')

Re-establishment by Goacher 1987

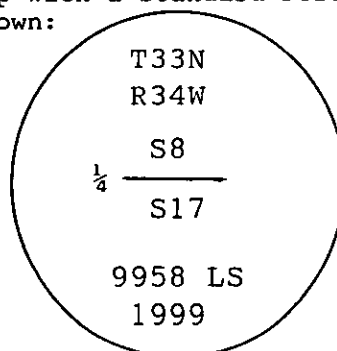
Found no original evidence. By single proportion set a 5/8"x 24" rebar with 1 1/4" orange plastic cap stamped Goacher 7318-S, from which:

A 24" Douglas Fir bears N40°E, 35.3' distant, scribed 1/4 S BT.

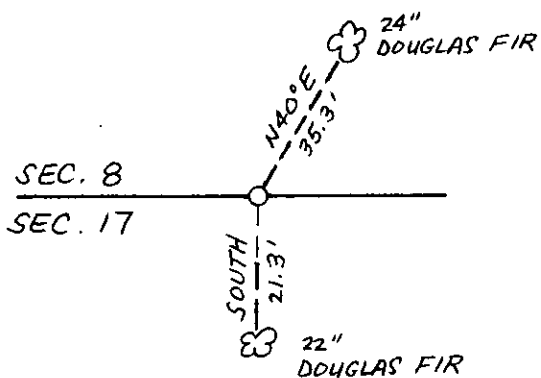
A 22" Douglas Fir bears South, 21.3' distant, scribed 1/4 S BT.

2) Found 5/8" rebar and plastic cap per record.

3) Replaced the found rebar and cap with a standard Forest Service aluminum monument, set 24" in the ground, marked as shown:



Existing bearing trees are alive and in good condition. Blazes and scribing were painted red, new bearing tree tags were attached to trees. Bearings and distances to trees are the same as Goacher record.



SKETCH OF CORNER

CERTIFICATION

I, Kevin Todd

certify the information shown herein is true and correct.

Kevin A Todd
Signature Ground Party Chief

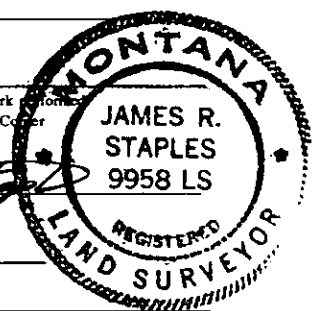
I, James R. Staples

certify that this corner Record correctly represents work performed by me or under my direction in compliance with the "Corner Recordation Act" (70-22-101, et seq., M.C.A.)

James R. Staples
Signature of Surveyor & Seal

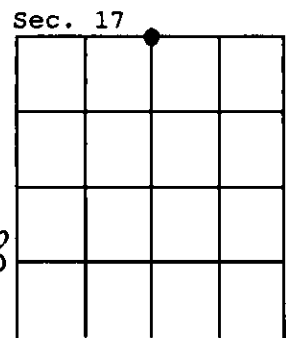
Date: 5-3-99 Reg. No. 9958

Employer: J.R.S. Surveying, Inc.



Office of Clerk and Recorder, County of Lincoln. This "corner record" was filed for record on May 3, 1999 was noted on the cross-index plat and is assigned page No. in book No. 10328

Coral M. Cumming
County Official PUB



Cross Index No. J-7 T. 33N R. 34W P.M.M.