

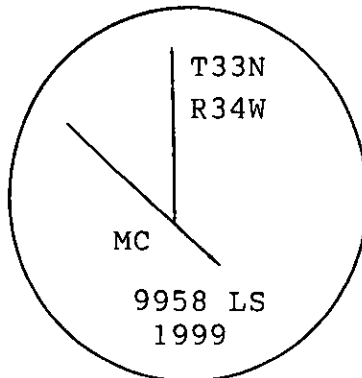
## INSTRUCTIONS

1. Original and/or subsequent record used to evaluate the corner position.
2. Description of evidence found, not discrepancies in the record, state method of establishing lost or obliterated corners.
3. Description of monument and accessories set to perpetuate the corner position.
4. Sketch of corner, show all pertinent data which can best be shown in a sketch example, corner marking, topography ties, position of accessories, etc.
5. Certification must be signed and sealed by Land Surveyor registered in the State of Montana.
6. Fill in Cross Index & Section Diagram at bottom of sheet.

## CERTIFIED CORNER RECORDATION

Corner MC west line Sec 17 T. 33N R. 34W P.M.M. Lincoln County

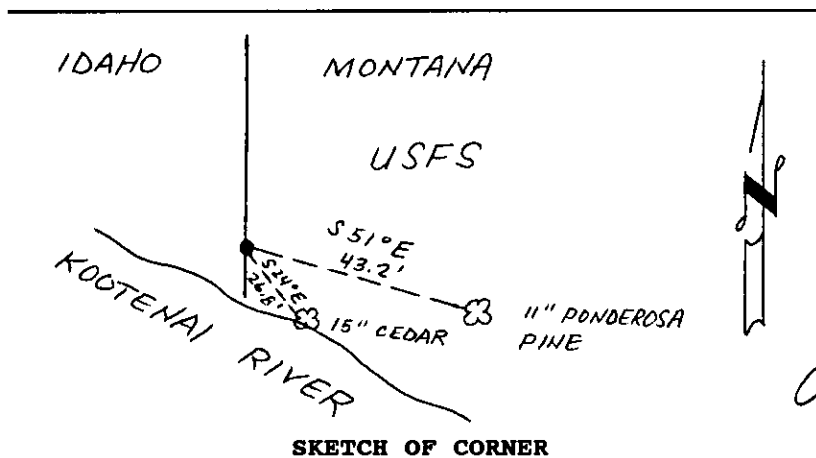
- 1) Original GLO record- 1903  
The point for meander corner falls on a rocky bluff, where it is impractical to establish a corner or to establish a witness corner any nearer than the State Boundary Post #38, which becomes the witness corner to the meander corner.
- 2) Nothing found on the ground at meander corner position. State Boundary Post #38 was found.
- 3) At a point which was record distance from State Boundary Post #38 and on line between State Boundary Posts #38 and #40 (#39 was not found), set a 5/8"x 30" rebar, with a 3 1/4" aluminum cap, marked as shown:



From which:

A 15" Cedar, bears S24°E, 26.8' distant and scribed T33N R34W S17 MC BT.  
An 11" Ponderosa Pine bears S51°E, 43.2' distant and scribed T33N R34W S17 MC BT.

Blazes and scribing were painted red. Bearing tree tags and Land Survey Monument signs were attached to trees. A 6' steel post with Land Survey Monument and Forest Service Property Boundary decals attached was placed 4.1 feet north of monument.



## CERTIFICATION

I, Kevin Todd

certify the information shown herein is true and correct.

Kevin A. Todd  
Signature Ground Party Chief

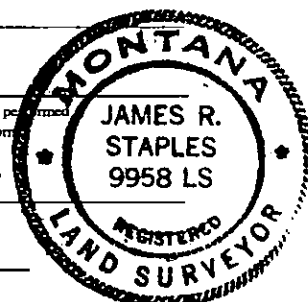
I, James R. Staples

certify that this corner Record correctly represents work performed by me or under my direction in compliance with the "Corner Recordation Act" (70-22-101, et seq., M.C.A.)

James R. Staples  
Signature of Surveyor & Seal

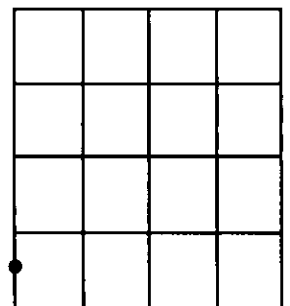
Date: 5-3-99 Reg. No. 9958

Employer: J.R.S. Surveying, Inc.



Office of Clerk and Recorder, County of Lincoln. This "corner record" was filed for record on May 3, 1999 was noted on the cross-index plat and is assigned page No. 10327 in book No. 10327

Coral M. Cummings By PLB  
County Official



Cross Index No. M.3-5 T. 33N R. 34W PMM