

INSTRUCTIONS

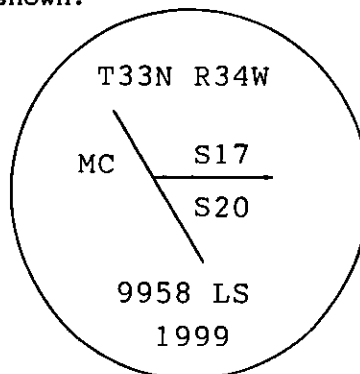
1. Original and/or subsequent record used to evaluate the corner position.
2. Description of evidence found, not discrepancies in the record, state method of establishing lost or obliterated corners.
3. Description of monument and accessories set to perpetuate the corner position.
4. Sketch of corner, show all pertinent data which can best be shown in a sketch example, corner marking, topography ties, position of accessories, etc.
5. Certification must be signed and sealed by Land Surveyor registered in the State of Montana.
6. Fill in Cross Index & Section Diagram at bottom of sheet.

CERTIFIED CORNER RECORDATION

Corner MC Secs. 17 & 20 T. 33N R. 34W P.M.M. Lincoln County

- 1) Original Record- GLO 1903
Right bank of Kootenai River. On a limestone ledge 10x8x2 feet above ground, I cut a cross (x) at exact corner point for meander corner of fractional Sections 17 and 20, marked M.C. on west side, with 3 grooves on south side from which:

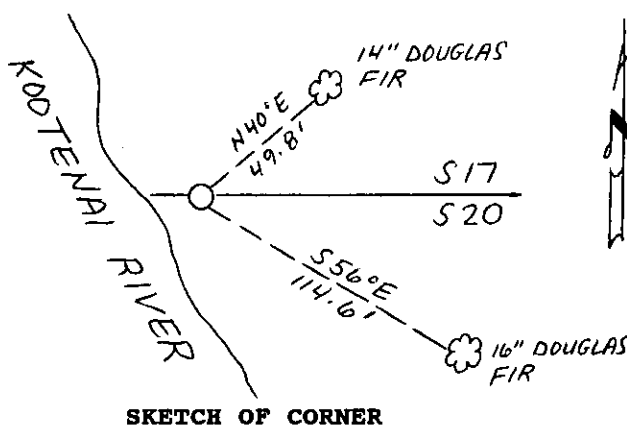
A Cedar, 18" diameter, bears S15°13'E, 51 links (33.66'), marked T33N R34W S20 MC BT.
A Cedar, 16" diameter, bears N35°W, 8 links (5.28'), marked T33N R34W S17 MC BT.
- 2) Nothing found on the ground. A cedar stump with chop marks was found. Appeared to be from a prior search for evidence.
- 3) The position of the original meander corner as determined from survey was below the ordinary high water mark of the Kootenai River. At a position safely back from the high bank of the river, and on the line between sections 17 and 20, set a 5/8"x30" rebar, with a 3/4" aluminum cap marked as shown:



From which:

A 16" Douglas Fir, bears S56°E, 114.6' distant, and scribed T33N R34W S20 MC BT.
A 14" Douglas Fir, bears N40°E, 49.8' distant, and scribed T33N R34W S17 MC BT.

Blazes and scribing on Bearing trees were painted red. Bearing tree tags and Land Survey Monument signs were attached to trees. A 6' steel post with a Land Survey Monument decal attached was placed 1' west of monument.



SKETCH OF CORNER

CERTIFICATION

I, Kevin Todd

certify the information shown herein is true and correct.

Kevin A Todd
Signature Ground Party Chief

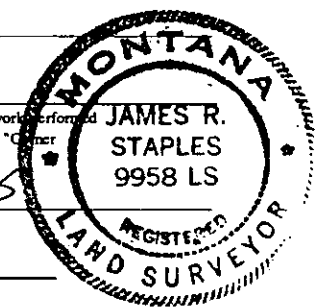
I, James R. Staples

certify that this corner Record correctly represents work performed by me or under my direction in compliance with the "Corner Recordation Act" (70-22-101, et seq., M.C.A.)

James R. Staples
Signature of Surveyor & Seal

Date: 5-3-99 Reg. No. 9958

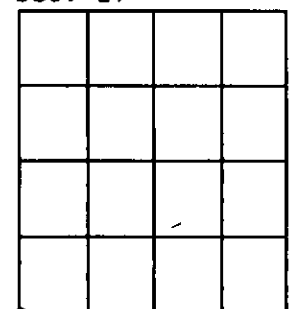
Employer: J.R.S. Surveying, Inc.



Office of Clerk and Recorder, County of Lincoln. This "corner record" was filed for record on May 3, 1999 was noted on the cross-index plat and is assigned page No. — in book No. 10320

Coral M. Cummings
County Official

Sec. 17



Cross Index No. N-5.1 T. 33N R. 34W PMM