

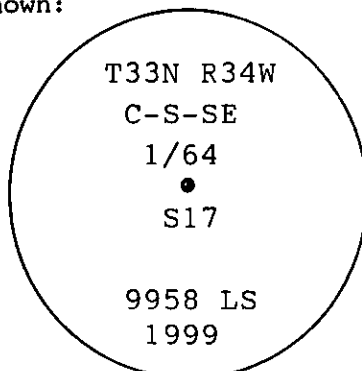
INSTRUCTIONS

1. Original and/or subsequent record used to evaluate the corner position.
2. Description of evidence found, not discrepancies in the record, state method of establishing lost or obliterated corners.
3. Description of monument and accessories set to perpetuate the corner position.
4. Sketch of corner, show all pertinent data which can best be shown in a sketch example, corner marking, topography ties, position of accessories, etc.
5. Certification must be signed and sealed by Land Surveyor registered in the State of Montana.
6. Fill in Cross Index & Section Diagram at bottom of sheet.

CERTIFIED CORNER RECORDATION

Corner C-S-SE1/64 COR SEC 17 T. 33N R. 34W P.M.M. Lincoln County

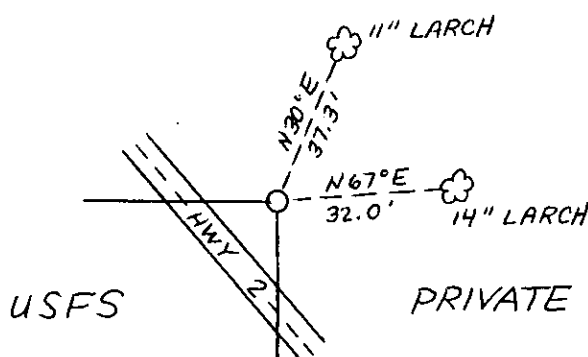
- 1) No records found at Lincoln County Courthouse
- 2) No evidence found on the ground
- 3) At the corner position as determined by survey, set a 5/8"x 30" rebar, with a 3 1/4" aluminum cap, marked as shown:



From which:

An 11" Larch bears N30°E, 37.3' distant, scribed C S SE1/64 S17 BT.
A 14" Larch bears N67°E, 32.0' distant, scribed C S SE1/64 S17 BT.

Monument was set flush with ground 9' easterly of easterly edge of Highway 2. A 5" wood post with Land Survey Monument, Forest Service Property Boundary, and Location signs attached was placed 2.2' south of monument. Blazes and scribing on bearing trees were painted red. Bearing tree tags and Land Survey Monument signs were attached to trees. A fence corner bears N42°E, 13.5'.



SKETCH OF CORNER

CERTIFICATION

I, John Marquette

certify the information shown herein is true and correct.

Signature Ground Party Chief

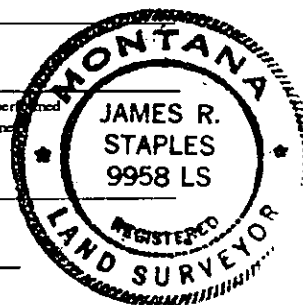
I, James R. Staples

certify that this corner Record correctly represents work performed by me or under my direction in compliance with the "Corner Recordation Act" (70-22-101, et seq., M.C.A.)

Signature of Surveyor & Seal

Date: 5-3-99 Reg. No. 9958

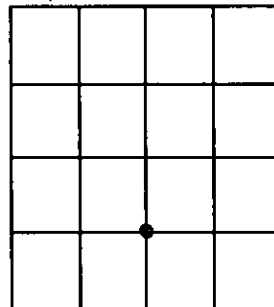
Employer: J.R.S. Surveying, Inc.



Office of Clerk and Recorder, County of Lincoln. This "corner record" was filed for record on May 3, 1999 was noted on the cross-index plat and is assigned page No. 1 in book No. 10319

Coral M. Cummins
County Official

SE 1/4 Sec. 17



Cross Index No. M.5-8 T. 33N R. 34W PMM