

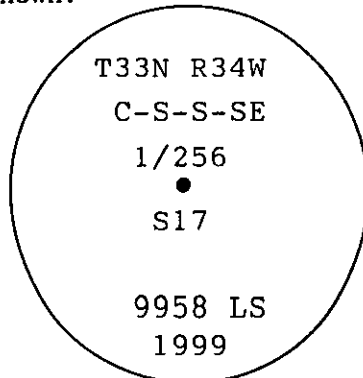
## INSTRUCTIONS

1. Original and/or subsequent record used to evaluate the corner position.
2. Description of evidence found, not discrepancies in the record, state method of establishing lost or obliterated corners.
3. Description of monument and accessories set to perpetuate the corner position.
4. Sketch of corner, show all pertinent data which can best be shown in a sketch example, corner marking, topography ties, position of accessories, etc.
5. Certification must be signed and sealed by Land Surveyor registered in the State of Montana.
6. Fill in Cross Index & Section Diagram at bottom of sheet.

## CERTIFIED CORNER RECORDATION

Corner C-S-S-SE1/256 Sec 17 T. 33N R. 34W P.M.M. Lincoln County

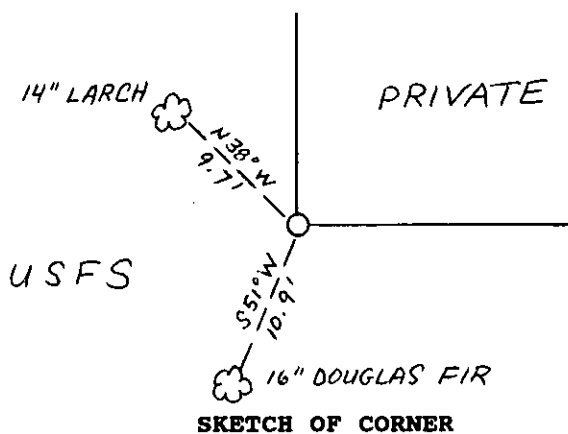
- 1) No records found at Lincoln County Courthouse
- 2) No evidence found on the ground
- 3) At the corner position as determined by survey, set a 5/8"x 30" rebar, with a 3 1/4" aluminum cap, marked as shown:



From which:

A 16" Douglas Fir bears S51°W, 10.9' distant, scribed CSS SE1/256 S17 BT.  
A 14" Larch bears N38°W, 9.7' distant, scribed CSS SE1/256 S17 BT.

Monument was set 0.1' above grade. A 6' steel post with Land Survey monument and Forest Service Property Boundary decals attached was placed 0.8' east of monument. Blazes and scribing on bearing trees were painted red. Bearing tree tags and Land Survey monument signs were attached to trees.



SKETCH OF CORNER

## CERTIFICATION

I, John Marquette

certify the information shown herein is true and correct.

John Marquette  
Signature Ground Party Chief

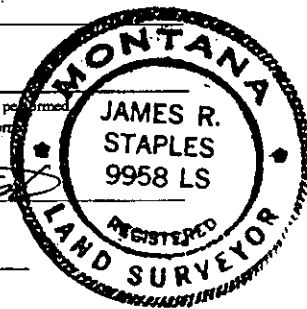
I, James R. Staples

certify that this corner Record correctly represents work performed by me or under my direction in compliance with the "Corner Recordation Act" (70-22-101, et seq., M.C.A.)

James R. Staples  
Signature of Surveyor & Seal

Date: 5-3-99 Reg. No. 9958

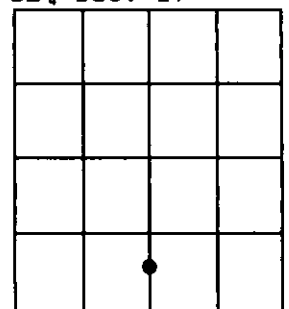
Employer: J.R.S. Surveying, Inc.



Office of Clerk and Recorder, County of Lincoln. This "corner record" was filed for record on May 3, 1999 was noted on the cross-index plat and is assigned page No. — in book No. 10317

Coral M. Cummings  
County Official

SE 1/4 Sec. 17



Cross Index No. M.75-8 T. 33 R. 34 PMM