

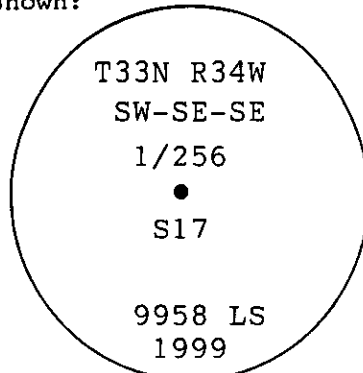
INSTRUCTIONS

1. Original and/or subsequent record used to evaluate the corner position.
2. Description of evidence found, not discrepancies in the record, state method of establishing lost or obliterated corners.
3. Description of monument and accessories set to perpetuate the corner position.
4. Sketch of corner, show all pertinent data which can best be shown in a sketch example, corner marking, topography ties, position of accessories, etc.
5. Certification must be signed and sealed by Land Surveyor registered in the State of Montana.
6. Fill in Cross Index & Section Diagram at bottom of sheet.

CERTIFIED CORNER RECORDATION

Corner SW-SE-SE1/256 SEC 17 T. 33N R. 34W P.M.M. LINCOLN County

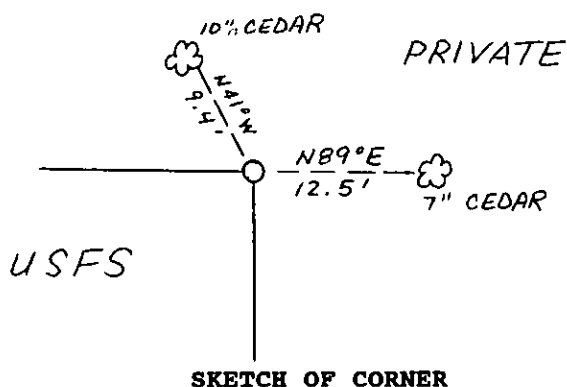
- 1) No records found at Lincoln County Courthouse
- 2) No evidence found on the ground
- 3) At the corner position as determined by survey, set a 5/8"x 30" rebar, with a 3 1/4" aluminum cap, marked as shown:



From which:

- A 10" Cedar bears N41°W, 9.4' distant, scribed SW SE SE1/256 S17 BT.
 A 7" Cedar bears N89°E, 12.5' distant, scribed SW SE SE1/256 S17 BT.

Monument was set 0.2' above grade. A 6' steel post with Land Survey Monument and Forest Service Property Boundary decals attached was placed 1' west of monument. Blazes and scribing on bearing trees were painted red. Bearing tree tags and Land Survey monument signs were attached to trees.



SKETCH OF CORNER

CERTIFICATION

I, John Marquette

certify the information shown herein is true and correct.

John Marquette
 Signature Ground Party Chief

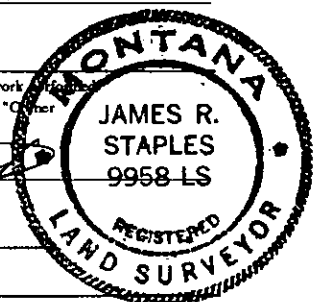
I, James R. Staples

certify that this corner Record correctly represents work performed by me or under my direction in compliance with the "Corner Recordation Act" (70-22-101, et seq., M.C.A.)

James R. Staples
 Signature of Surveyor & Seal

Date: 5-3-99 Reg. No. 9958

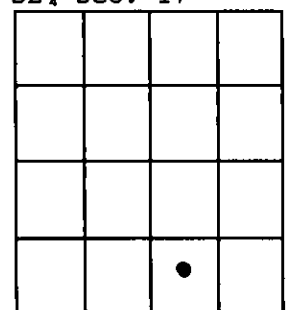
Employer: J.R.S. Surveying, Inc.



Office of Clerk and Recorder, County of Lincoln. This "corner record" was filed for record on 5-3-99 was noted on the cross-index plat and is assigned page No. — in book No. 10316

Carol Mcummie
 County Official

SE 1/4 Sec. 17



Cross Index No. M.75-8.25 T. 33N R. 34W PMM