

CERTIFIED CORNER RECORDATION

Corner 1/4 S25 S36 T. 33 N., R. 34 W., P.M.M. Lincoln County

Record :

1903 Township Subdivision, by GLO Surveyor A. Benedict.

"40.06 chs. Set a Limestone 15x9x7 ins., 10 ins. in the ground, for 1/4 sec. cor. marked 1/4 on the N face; from which:

A Hemlock, 9 ins. diam., bears N 39°15' E, 27 lks. dist., marked 1/4 S25 BT.

A Hemlock, 10 ins. diam., bears S 21°W, 29 lks. dist., marked 1/4 S36 BT."

1968 BLM remonumentation by BLM Surveyor French.

Found Evidence :

During field search of area, no original stone monument or accessories from 1903 GLO survey were recovered. Noted the area has been heavily logged and roaded during the past years.

Perpetuation :

At a computed position from a section breakdown done by Davis Surveying, Inc., on record at the Lincoln County Courthouse, Libby, Montana, set a 2 1/2 inch diam. alum. pipe 30 ins. long, 25 ins. in the ground, with a 3 1/4 inch diam. alum. cap marked as shown below, from which:

A Western Tamarack, 8 1/2 ins. diam., bears N 21° W, 7.80 feet dist., scribed (1/4 S25 BT).

A Western Tamarack, 7 1/2 ins. diam., bears S 22° W, 16.00 feet dist., scribed (1/4 S36 BT).

Attached Bearing Tree signs to both trees.

Raised a collar of stone 18 ins. wide and 6 ins. high around set alum. monument.

Magnetic Declination: 18° East



CERTIFICATION

I, John Darnon

certify the information shown herein is true and correct

Signature of Ground Party Chief

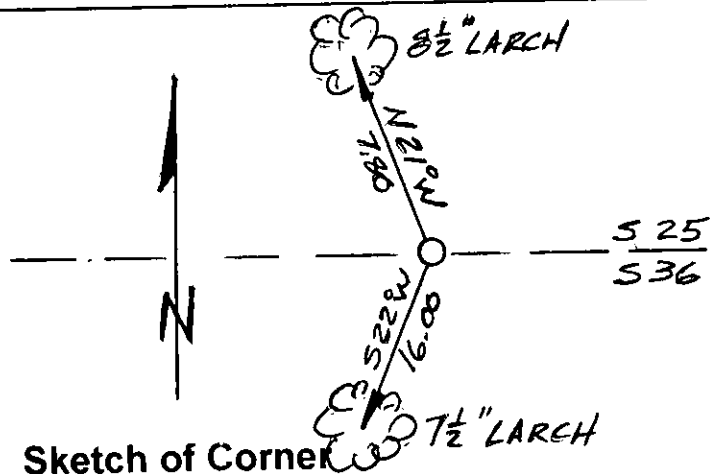
I, Kenneth E. Davis

certify that this Corner Record correctly represents work performed by me or under my direction in compliance with the "Corner Recoraction Act" (16-22-101, et seq., M.C.A.)

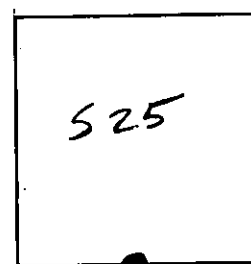
Signature of Surveyor & Seal

Date: _____ Reg. No. 4975-S

Employer: Davis Surveying, Inc.



Section



Office of Clerk and Recorder, County of Lincoln

This "corner record" was filed for record on 1-20-99

was noted on the cross-index plat and is assigned page No. 10283

in book No. Coral M. Cummings By DUB

County Official

Cross Index No. S25 1/4 S36 T. 33 N., R. 34 W., PMM

• THIS CORNER