

# CERTIFIED CORNER RECORDATION

Corner 1/4 Secs. 34&35 T. 33N R. 34W P.M., MT Lincoln County

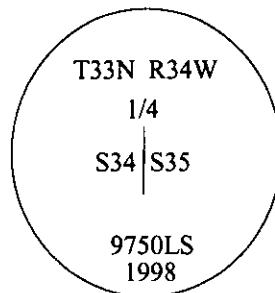
- I. 1903 G.L.O. Original Record by Allen B. Benedict: Corner falls on a rock ledge, 12x12 ft., 2.0 ft. above ground, I mark a cross (x) at exact cor. point for 1/4 sec. cor. mkd. "1/4" on W. side.

Established two bearing trees:

A fir, 9 ins. diam., bears S16°45'E, 40 lks. dist., mkd. "1/4 S35 BT".  
A fir, 9 ins. diam., bears S85°45'W, 35 lks. dist., mkd. "1/4 S34 BT".

- II. No evidence found.

- III. Set by survey, a 2 1/2 in. diam. aluminum pipe, 30 ins. long, 22 ins. in the ground, with a 3 1/4 in. diam. aluminum cap, mkd. as shown.

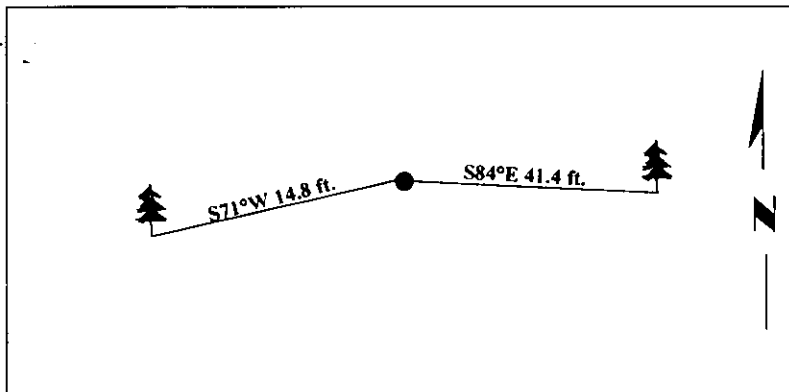


Established two bearing trees:

A pine, 12 ins. diam., bears S84°E, 41.4 ft. dist., mkd. "1/4 S34 BT".  
A fir, 16 ins. diam., bears S71°W, 14.8 ft. dist., mkd. "1/4 S35 BT".

Painted bearing trees and attached Land Survey Monument and Bearing Tree signs.

Magnetic Declination: 20° East



SKETCH OF CORNER

CERTIFICATION

I, Thomas M. Hommel certify the information shown herein is true and correct.

I, Steven A. Boyer certify that this Corner Record correctly represents work performed by me or under my direction in compliance with the "Corner Recordation Act" (20-22-101, et seq., M.C.A.)

Signature of Surveyor & Seal

Date: 8/11/98

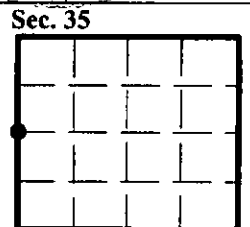
Reg. No.: 9750LS

Employer: U.S. FOREST SERVICE

STEVEN A. BOYER  
9750LS  
REGISTERED  
LAND SURVEYOR

Office of Clerk and Recorder, County of Lincoln. This "corner record" was filed for record on 10/19/98 and was noted on the cross-index plat and is assigned page No. 10242, in book No. \_\_\_\_\_.

Coral M. Cumming By DLS  
County Official



● - corner this sheet