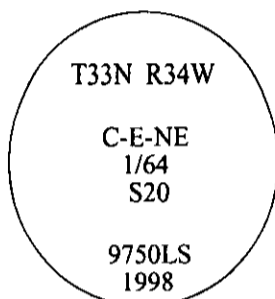


CERTIFIED CORNER RECORDATION

Corner C-E-NE 1/64 Sec. 20 T. 33N R. 34W P.M., MT Lincoln County

- I. No previous history.
- II. No evidence found.
- III. Set by survey, a 3/4 in. diam. aluminum driveable rod, 30 ins. long, 22 ins. in the ground, with a 3 1/4 in. diam. aluminum cap, mkd. as shown.

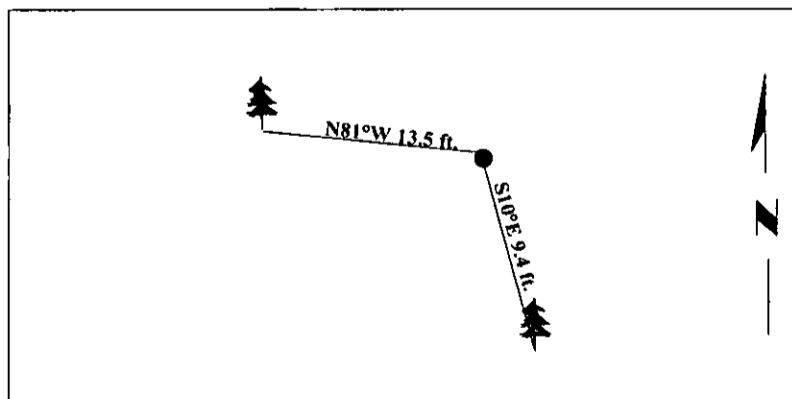


Established two bearing trees:

- A cedar, 5 ins. diam., bears S10°E, 9.4 ft. dist., mkd. "C-E-NE 1/64 S20 BT".
- A cedar, 10 ins. diam., bears N81°W, 13.5 ft. dist., mkd. "C-E-NE 1/64 S20 BT".

Painted bearing trees and attached Land Survey Monument and Bearing Tree signs.

Magnetic Declination: 20° East

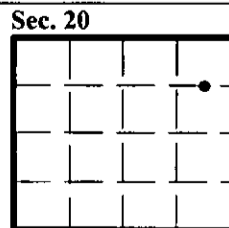


SKETCH OF CORNER

CERTIFICATION	
I. <u>Joe McElmurry</u>	certify the information shown herein is true and correct.
<i>Joe McElmurry</i>	
I. <u>Steven A. Boyer</u>	certify that this Corner Record correctly represents work performed by me or under my direction in compliance with the "Corner Recordation Act" (70-22-101, et seq., M.C.A.)
<i>Steven A. Boyer</i>	
Date: <u>8/25/98</u>	Signature of Surveyor & Seal
Reg. No.: <u>9750LS</u>	
Employer: <u>U.S. FOREST SERVICE</u>	

Office of Clerk and Recorder, County of Lincoln. This "corner record" was filed for record on 10-6-98 and was noted on the cross-index plat and is assigned page No. 10241 in book No. _____

Carol M. Cummings
County Official



• - corner this sheet