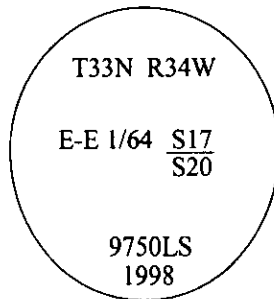


CERTIFIED CORNER RECORDATION

Corner E-E 1/64 Secs. 17&20 T. 33N R. 34W P.M., MT Lincoln County

- I. No previous history.
- II. No evidence found.
- III. Set by survey, a 3/4 in. diam. aluminum driveable rod, 30 ins. long, 22 ins. in the ground, with a 3 1/4 in. diam. aluminum cap, mkd. as shown.

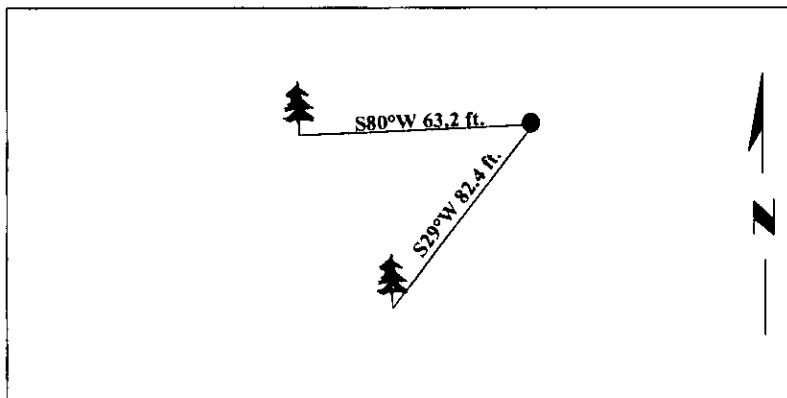


Established two bearing trees:

A cedar, 22 ins. diam., bears S29°W, 82.4 ft. dist., mkd. "E-E 1/64 S20 BT".
A spruce, 11 ins. diam., bears S80°W, 63.2 ft. dist., mkd. "E-E 1/64 S20 BT".

Painted bearing trees and attached Land Survey Monument and Bearing Tree signs.

Magnetic Declination: 20° East



SKETCH OF CORNER

CERTIFICATION

I, Joe McElmurry
certify the information shown herein is true and correct.

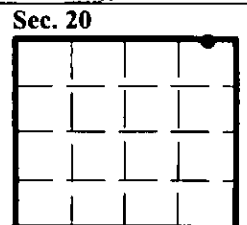
Steven A. Boyer
certify that this Corner Record correctly represents work performed by me or under my direction in compliance with the "Corner Recordation Act" (70-22-101, et seq., M.C.A.)

Signature of Surveyor & Seal
STEVEN A. BOYER
9750LS
REGISTERED
LAND SURVEYOR

Date: 8/25/98
Reg. No.: 9750LS
Employer: U.S. FOREST SERVICE

Office of Clerk and Recorder, County of Lincoln. This "corner record" was filed for record on 10-6-98 and was noted on the cross-index plat and is assigned page No. 10240 in book No. _____.

Coral M. Cummings By per
County Official



• - corner this sheet

Cross Index No. E-E 1/64 T. 33N R. 34W P.M., MT