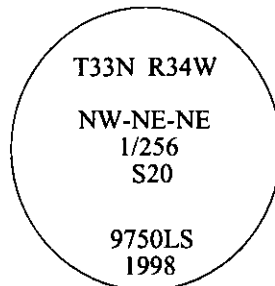


CERTIFIED CORNER RECORDATION

Corner NW-NE-NE 1/256 Sec. 20 T. 33N R. 34W P.M., MT Lincoln County

- I. No previous history.
- II. No evidence found.
- III. Set by survey, a 3/4 in. diam. aluminum driveable rod, 30 ins. long, 22 ins. in the ground, with a 3 1/4 in. diam. aluminum cap, mkd. as shown.

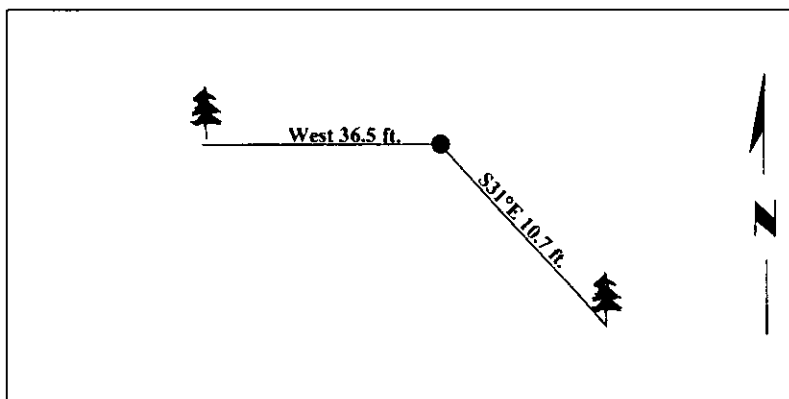


Established two bearing trees:

- A fir, 17 ins. diam., bears S31°E, 10.7 ft. dist., mkd. "NW-NE-NE 1/256 S20 BT".
- A fir, 9 ins. diam., bears West, 36.5 ft. dist., mkd. "X" "BT".

Painted bearing trees and attached Land Survey Monument and Bearing Tree signs.

Magnetic Declination: 20° East

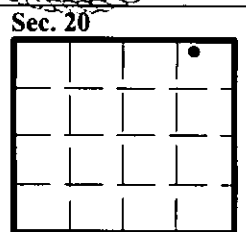


SKETCH OF CORNER

<p>CERTIFICATION</p> <p>I, <u>Joe McElmurry</u> certify the information shown herein is true and correct.</p>	
<p>I, <u>Steven A. Boyer</u> certify that this Corner Record correctly represents work performed by me or under my direction in compliance with the "Corner Recordation Act" (70-22-901 et seq., M.C.A.)</p>	
<p>Date: <u>8/25/98</u></p>	<p>Signature of Surveyor & Seal</p>
<p>Reg. No.: <u>9750LS</u></p>	<p>Employer: <u>U.S. FOREST SERVICE</u></p>

Office of Clerk and Recorder, County of Lincoln. This "corner record" was filed for record on 10-6-98 and was noted on the cross-index plat and is assigned page No. 10238 in book No. _____

Coral M. Cummings By PEB
County Official



• - corner this sheet

Cross Index No. NW-NE-NE 1/256 T. 33N R. 34W P.M., MT