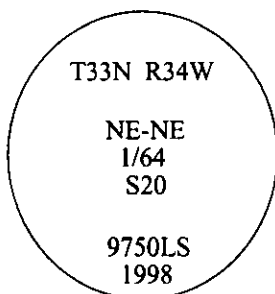


# CERTIFIED CORNER RECORDATION

Corner NE-NE 1/64 Sec. 20 T. 33N R. 34W P.M., MT Lincoln County

- I. No previous history.
- II. No evidence found.
- III. Set by survey, a 3/4 in. diam. aluminum driveable rod, 30 ins. long, 22 ins. in the ground, with a 3 1/4 in. diam. aluminum cap, mkd. as shown.

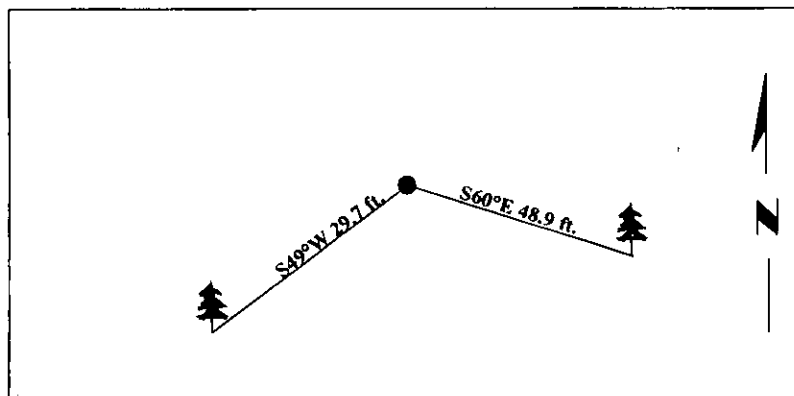


Established two bearing trees:

- A fir, 9 ins. diam., bears S60°E, 48.9 ft. dist., mkd. "NE-NE 1/64 S20 BT".
- A larch, 8 ins. diam., bears S49°W, 29.7 ft. dist., mkd. "NE-NE 1/64 S20 BT".

Painted bearing trees and attached Land Survey Monument and Bearing Tree signs.

Magnetic Declination: 20° East



SKETCH OF CORNER

**CERTIFICATION**

I, Joe McElmurry  
certify the information shown herein is true and correct.

I, Steven A. Boyer  
certify that this Corner Record correctly represents work performed by me or under my direction in compliance with the "Corner Recordation Act" (70-22-101 et seq., M.C.A.)

Signature of Surveyor & Seal: Steven A. Boyer

Date: 8/25/98

Reg. No.: 9750LS

Employer: U.S. FOREST SERVICE

**STEVEN A. BOYER**  
**9750LS**  
**REGISTERED**  
**LAND SURVEYOR**

Office of Clerk and Recorder, County of Lincoln. This "corner record" was filed for record on 10-6-98 and was noted on the cross-index plat and is assigned page No. 10236 in book No. \_\_\_\_\_.

Coral M. Cunningham  
County Official

