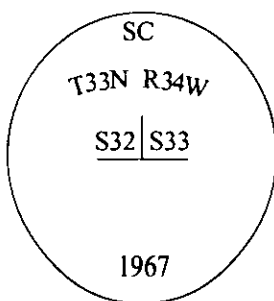


-CERTIFIED CORNER RECORDATION

Corner	SC	Secs. 32&33	T. 33N	R. 34W	P.M., MT	Lincoln	County
--------	----	-------------	--------	--------	----------	---------	--------

- I. 1912 G.L.O. Record by William C. Perkins: Set a granite stone, 21x16x10 ins. 15 ins. in the ground, for the standard corner of secs. 32 and 33, mkd. with "SC" on N., with 4 grooves on E. and 2 grooves on W. face. Established two bearing trees.

1967 B.L.M. Remonumentation by Woodrow E. Damm et. al.: The standard cor. of secs. 32 and 33, monumented with a granite stone, 20x16x10 ins., firmly set, mkd. "SC" on the N. face, 4 grooves on the E. Face, and 2 grooves on the W. face, and witnessed by the remains of the original bearing trees. At the corner point, set an iron post, 30 ins. long, 2 1/2 ins. diam., 24 ins. in the ground, with brass cap mkd. as shown.



Established one new bearing tree, and buried the original stone alongside the iron post.

- II. Found a 3 1/4 in. diam. B.L.M. brass cap, flush with the ground, mkd. as shown.

from which:

A cedar snag, 16 ins. diam., bears N55°W, 17.2 ft. dist., with visible scribing. (B.L.M.-record)

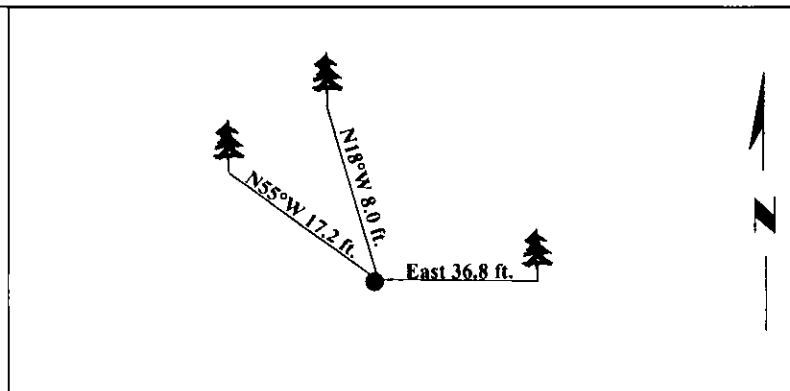
- III. Established two new bearing trees:

A hemlock, 9 ins. diam., bears East, 36.8 ft. dist., mkd. "T33N R34W S33 BT".

A hemlock, 6 ins. diam., bears N18°W, 8.0 ft. dist., mkd. "T33N R34W S32 BT".

Painted bearing trees and attached Land Survey Monument and Bearing Tree signs.

Magnetic Declination: 20° East

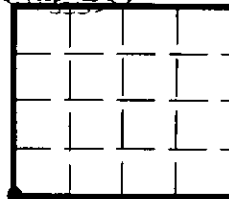


SKETCH OF CORNER

CERTIFICATION	
I. <u>Thomas M. Hommel</u>	certify the information shown herein is true and correct.
I. <u>Steven A. Boyer</u>	certify that this Corner Record correctly represents work performed by me or under my direction in compliance with the "Corner Recordation Act" (70-22-101, et seq., M.C.A.)
<div style="display: flex; justify-content: space-between;"> Signature of Surveyor </div>	
Date: <u>6/09/98</u>	
Reg. No.: <u>9750LS</u>	
Employer: <u>U.S. FOREST SERVICE</u>	

Office of Clerk and Recorder, County of Lincoln. This "corner record" was filed for record on 8-19-98 and was noted on the cross-index plat and is assigned page No. 10190 in book No. _____.

County Official



• - corner this sheet