

CERTIFIED CORNER RECORDATION

Corner 1/4 Secs. 33&34 T. 33N R. 34W P.M., MT Lincoln County

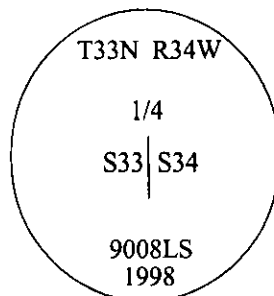
- I. 1912 G.L.O. Record by William C. Perkins: Set a shale stone, 16x8x6 ins., 11 ins. in the ground for the 1/4 sec. cor., mkd. "1/4" on W. face.

Established two bearing trees:

A fir, 14 ins. diam., bears N28°E, 40 lks. dist., mkd "1/4 S34 BT".
A fir, 8 ins. diam., bears S80°W, 20 lks. dist., mkd "1/4 S33 BT".

- II. Found stone, 6x8 ins., protruding 5 ins. above the ground, firmly set, mkd. "1/4" on W. face. No evidence of bearing trees found.

- III. At the exact corner position, as determined by the original found stone, set a 2 1/2 in. diam. aluminum pipe, 30 ins. long, 20 ins. in the ground, with a 3 1/4 in. diam. aluminum cap, as shown. A mound of stone surrounds the monument.

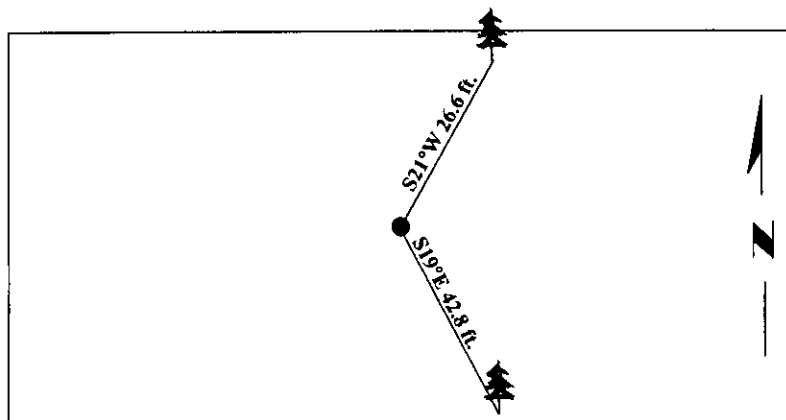


Established two new bearing trees:

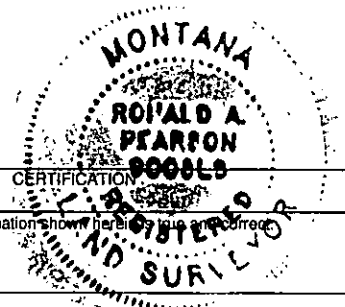
A fir, 14 ins. diam., bears S19°E, 42.8 ft. dist., mkd. "1/4 S34 BT".
A fir, 16 ins. diam., bears S21°W, 26.6 ft. dist., mkd. "1/4 S33 BT".

Bury the original stone alongside the aluminum pipe.
Painted bearing trees and attached Land Survey Monument and Bearing Tree signs.

Magnetic Declination: 20° East



SKETCH OF CORNER



I, Rex O. Rice
certify the information shown here is true and correct.

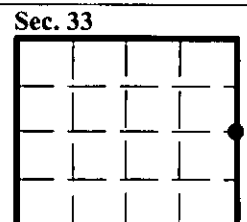
I, Ronald A. Pearson
certify that this Corner Record correctly represents work performed by me or under my direction in compliance with the "Corner Recordation Act" (70-22-101, et seq., M.C.A.)

[Signature]
Signature of Surveyor & Seal

Date: 5/20/98
Reg. No.: 9008LS
Employer: U.S. FOREST SERVICE

Office of Clerk and Recorder, County of Lincoln. This "corner record" was filed for record on 8-3-98 and was noted on the cross-index plat and is assigned page No. 10142 in book No. _____.

[Signature]
County Official



● - corner this sheet