

# CERTIFIED CORNER RECORDATION

Corner Standard Sec. 33 T. 33N R. 34W P.M., MT Lincoln County  
1/4 Cor.

- I. 1903 G.L.O. Record by Allen B. Benedict: Set a granite stone, 21x18x8 ins., 16 ins. in the ground, for standard 1/4 sec. cor., mkd. "SC 1/4" on N. face.

Established two bearing trees:

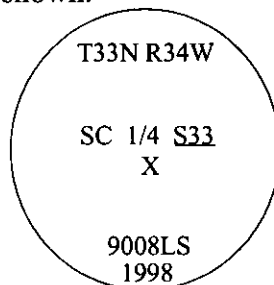
A pine, 9 ins. diam., bears N72°E, 54 lks. dist., mkd "1/4 S33 BT".  
A cedar, 24 ins. diam., bears N0°45'W, 28 lks. dist., mkd "1/4 S33 BT".

- II. Found stone, 16x7 ins. diam., protruding 8 ins. above the ground, firmly set, mkd. "SC 1/4" on the North face.

from which:

A pine, 29 ins. diam., bears N72°E, 35.6 ft. dist., with visible scribing.  
No evidence of Bearing tree at N0°45'E falls in a skid road.

- III. At the exact corner position, as determined by the found original stone and witnessed by one of the original bearing trees, set a 30 ins. long, 2 1/2 in. diam. aluminum pipe, 18 ins. into the ground, with a 3 1/4 in. diam. aluminum cap, mkd. as shown.

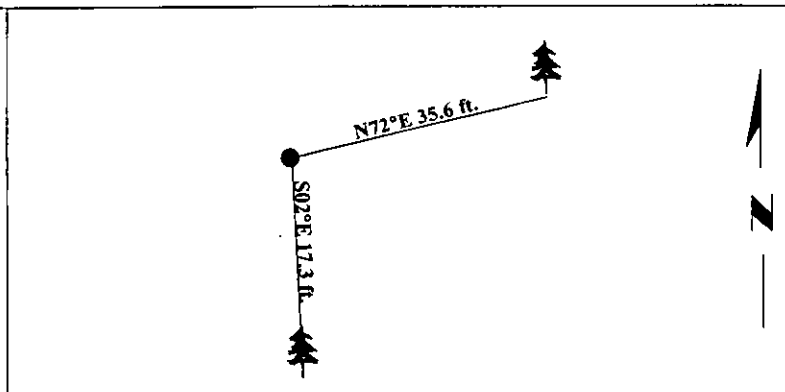


Established one new bearing tree:

A fir, 18 ins. diam., bears S02°E, 17.3 ft. dist., mkd. "1/4 S33 BT".  
No trees available in S33, due to recent logging.

Buried the original alongside the aluminum pipe.  
Painted bearing trees and attached Land Survey Monument and Bearing Tree signs.

Magnetic Declination: 20° East



SKETCH OF CORNER

**CELESTIAL**  
MONTANA  
RONALD A. PEARSON  
9008LS  
REGISTERED  
SURVEYOR

I, Rex O. Rice  
certify the information herein is true and correct.

I, Ronald A. Pearson  
certify that this Corner Record correctly represents work performed by me or under my direction in compliance with the "Corner Recordation Act" (70-22-101, et seq., M.C.A.)

Ronald A. Pearson  
Signature of Surveyor & Seal

Date: 5/20/98

Reg. No.: 9008LS

Employer: U.S. FOREST SERVICE

Office of Clerk and Recorder, County of Lincoln. This "corner record" was filed for record on 8-3-98 and was noted on the cross-index plat and is assigned page No. 10141 in book No. \_\_\_\_\_

Carol M. Cummings, RLS  
County Official

