

CERTIFIED LAND CORNER RECORDATION

DESCRIPTION OF CORNER EVIDENCE FOUND, AND ORIGINAL RECORD (IF KNOWN)

Not previously set

DESCRIPTION OF MONUMENT AND ACCESSORIES ESTABLISHED TO PERPETUATE THE ORIGINAL LOCATION OF THIS CORNER:

Date of work: Jan. 1981

Monuments and accessories shown and described in diagram on REVERSE SIDE.

SKETCH, WITH COURSE AND DISTANCE TO ADJACENT CORNERS IF DETERMINED IN THIS SURVEY. (MAY SKETCH OR PASTE REPRODUCTION ON REVERSE SIDE.)

SEE REVERSE SIDE

Surveyor's Seal

I, Jeff Paullin
certify that the information shown herein is true and correct.

Jeff Paullin
Signature of Ground Party Chief

I, Jack H. Ninneman
certify that I have carefully performed or reviewed the work done on the diagrammed corner as reported on this recordation form and approve the same.

Jack H. Ninneman
Signature of Surveyor

DIAGRAM OF CORNER:

SEE REVERSE

N.		
	Sec. 4	
	Twp. 33 N.,	
	R 34	
	P.M.M.	

© = Corner recorded on the sheet

4661S
Registration Number

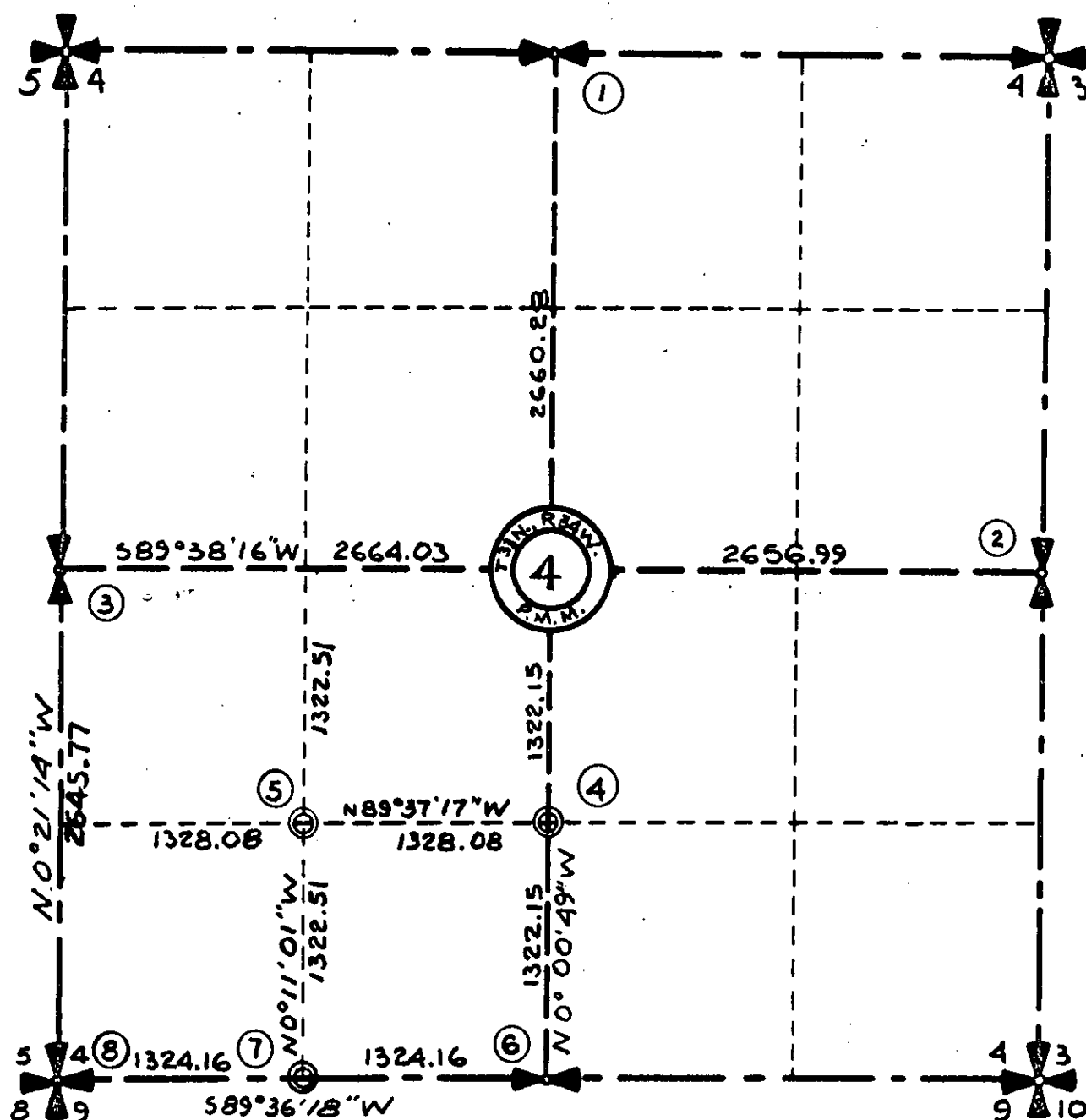
Office of Clerk and Recorder, County of Linn

This "corner record" was filed for record on the 23 day of February 1981, was noted on the cross-index plat and is assigned page No. 1014, in book No. 1

Eleanor L. Vaughn
County Official

Cross Index No. D-11 T. 33N R. 34W Mer. 1
D-10 E-11
E-10

Sec. 4 Twp. 33 N., R. 34 W., P.M.M.



(1) Found B.C. (stamped 5612S) 1980 3 BTs, one original.

(2) Found B.L.M. Brass cap with 2 BTs.

(3) Found steel pin with one original BT. stump.

(4) Set a 5/8" X 24" capped steel pin (stamped J.H.N. 4661S) from which a 10" Larch bears N 46° E 16.0 ft. and a 14" Larch bears S 52° W 23.0 ft. both scribed CS 1/16 S 4 BT. and posted.

(5) Set a 5/8" X 24" capped steel pin (stamped JHN 4661S) from which a 10" Larch bears N 14° W 10.9 ft. and a 10" Larch bears S 40° E 12.3 ft. both scribed SW 1/16 S 4 BT. and posted.

(6) Found B.L.M. brass cap with 2 Bts.

(7) Set a 5/8" X 24" capped steel pin (stamped JHN 4661S) from which a 10" Pine bears N 64° W 29.7 ft. scribed W 1/16 S 4 BT and posted. A 10" Pine bears S 28° W 4.5 ft. scribed W 1/16 S 9 BT and posted.

(8) Found B.L.M. brass cap with 2 BTs and one BT. stump.