

CERTIFIED CORNER RECORDATION

Corner Sec. Cor. Secs. 28,29,32,33 T. 33N R. 34W P.M., MT Lincoln County

- I. 1912 G.L.O. Record by William C. Perkins: Set a granite stone, 14x8x6 ins., 10 ins. in the ground for the cor. of secs. 28,29,32&33, mkd. with 1 notch on S. and 4 notches on E. edge.

Established four bearing trees:

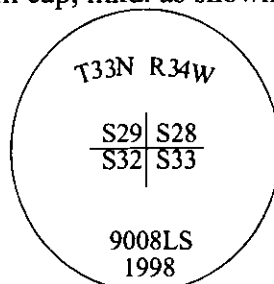
- A tamarack, 8 ins. diam., bears N50°E, 30 lks. dist., mkd "T33N R34W S28 BT".
- A pine, 6 ins. diam., bears S29°E, 28 lks. dist., mkd "T33N R34W S33 BT".
- A tamarack, 6 ins. diam., bears S43°W, 48 lks. dist., mkd "T33N R34W S32 BT".
- A tamarack, 5 ins. diam., bears N17°W, 31 lks. dist., mkd "T33N R34W S29 BT".

- II. Found stone, 7x5 ins., protruding 5 ins. above the ground, firmly set, mkd. with 4 notches on E. face, 1 notch on S. face.

from which:

- A dead larch, bears N50°E, 19.8 ft. dist., "33,34" S28BT" visible.
- A larch, bears S43°W, 31.7 ft. dist., with a healed face.
- A dead larch, bears N17°W, 20.5 ft. dist., with visible marks.

- III. At the exact corner position, as determined by the found original stone and witnessed by the remains of three of the original bearing trees, set a 2 1/2 in. diam. aluminum pipe, 30 ins. long, 26 ins. in the ground, with a 3 1/4 in. diam. aluminum cap, mkd. as shown.



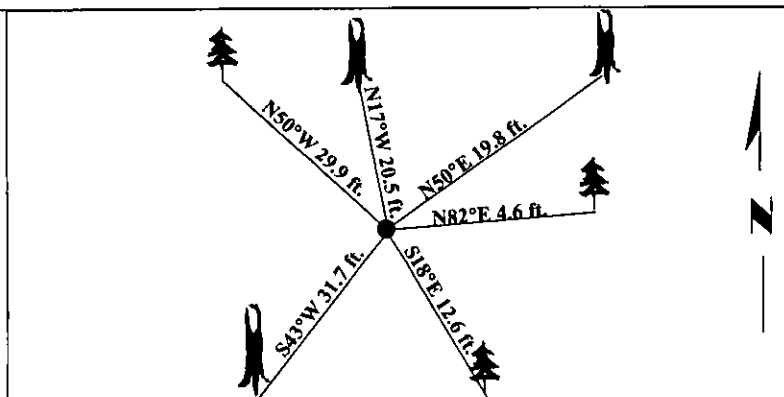
Established three new bearing trees:

- A pine, 18 ins. diam., bears N82°E, 4.6 ft. dist., mkd. "T33N R34W S28 BT".
- A fir, 10 ins. diam., bears S18°E, 12.6 ft. dist., mkd. "T33N R34W S33 BT".
- A larch, 12 ins. diam., bears N50°W, 29.9 ft. dist., mkd. "T33N R34W S29 BT".

Bury the original stone alongside the aluminum pipe.

Painted bearing trees and attached Land Survey Monument and Bearing Tree signs.

Magnetic Declination: 20° East



SKETCH OF CORNER

CERTIFICATION

I, Thomas M. Hommel
certify the information shown here is true and correct.

I, Ronald A. Pearson
certify that this Corner Record correctly represents work performed by me or under my direction in compliance with the "Corner Recordation Act" (70-22-101, et seq., M.C.A.)

Signature of Surveyor & Seal

Date: 5/18/98

Reg. No.: 9008LS

Employer: U.S. FOREST SERVICE

Office of Clerk and Recorder, County of Lincoln. This "corner record" was filed for record on 8-3-98 and was noted on the cross-index plat and is assigned page No. 10137 in book No. _____.

Coral M. Cummins By DUB
County Official

Sec. 33

● - corner this sheet