

CERTIFIED LAND CORNER RECORDATION
(REFERENCE FSM 7153.53)

DESCRIPTION OF CORNER EVIDENCE FOUND, AND ORIGINAL RECORD (IF KNOWN)

1972 BLM RECORD: FROM THE REMAINS OF THE ORIGINAL BEARING TREES, SET AN IRON POST,
30" LONG, 2 1/2" DIAM., 24 INS IN THE GROUND, WITH BRASS CAP MKD AS SHOWN.
FROM WHICH: AN 18" FIR BEARS N 42 1/2° E., 29 LKS., MKD WITH AN OVERGROWN BLAZE
AN 8" FIR BEARS N 68 1/2° W., 18 LKS., MKD. 1/4 S 4 BT.

FOUND: MONUMENT AS DESCRIBED ABOVE.

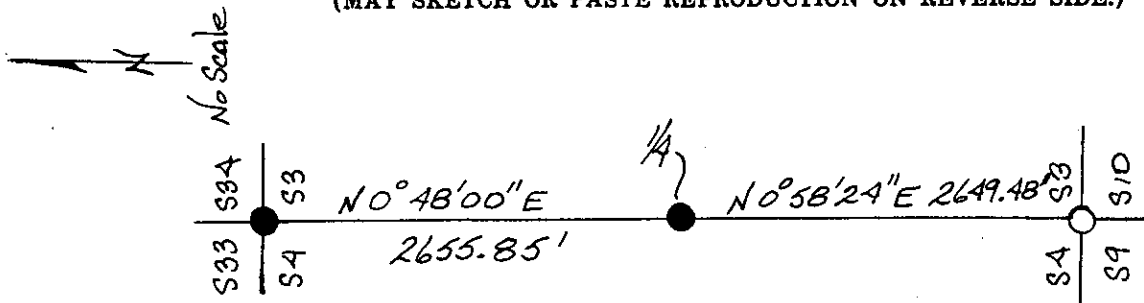
FROM WHICH: A 10" DOUG FIR BEARS N 70° W, 11.7 FT, SCRIBING VISIBLE
A 20" DOUG FIR BEARS N 44° E, 18.7 FT, HEALED FACE

DESCRIPTION OF MONUMENT AND ACCESSORIES ESTABLISHED
TO PERPETUATE THE ORIGINAL LOCATION OF THIS CORNER:

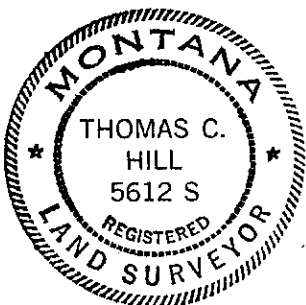
PAINTED RED BANDS AROUND BT'S

Date of work: 12-8-80

SKETCH, WITH COURSE AND DISTANCE TO ADJACENT CORNERS IF DETERMINED IN THIS SURVEY.
(MAY SKETCH OR PASTE REPRODUCTION ON REVERSE SIDE.)



Surveyor's Seal



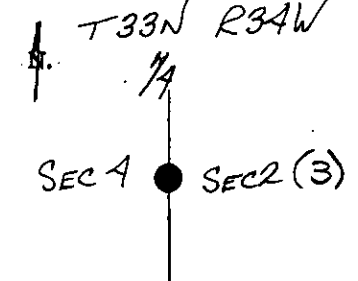
I, ANTHONY J. BACHMAN
certify that the information shown herein is true and correct.

Anthony J. Bachman
Signature of Ground Party Chief

I, THOMAS C. HILL
certify that I have carefully performed or reviewed the work done on the diagrammed corner as reported on this recordation form and approve the same.

Thomas C. Hill
Signature of Surveyor

DIAGRAM OF CORNER:



● = Corner recorded on the sheet

5612S
Registration Number

Office of Clerk and Recorder, County of Lincoln

This "corner record" was filed for record on the 9th day of February, 1981, was noted on the cross-index plat and is assigned page No. 1013, in book No. 1

Glenn J. Taylor, by Betty Hill,
County Official Deputy

Cross Index No. C-13 T. 33N R. 34W Mer.