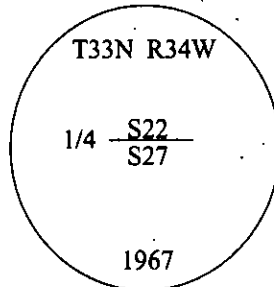


CERTIFIED CORNER RECORDATION

Corner 1/4 Secs. 22&27 T. 33N R. 34W P.M., MT Lincoln County

I. 1903 G.L.O. Original Record by Allen B. Benedict: Set a limestone, 15x8x6 ins., 10 ins. in the ground, for 1/4 sec. cor. mkd. "1/4" on N. face. Established two bearing trees.

1967 B.L.M. Remonumentation Record by Woodrow E. Damm et. al.: The 1/4 sec. cor. of secs. 22 and 27, monumented with a limestone, 15x8x6 ins., firmly set, mkd. "1/4" on the N. face, and witnessed by the original bearing trees. At the corner point, set an iron post, 30 ins. long, 2 1/2 ins. diam., 24 ins. in the ground, with brass cap mkd. as shown.



Established two new bearing trees and buried the original stone alongside the iron post.

1979 Certified Corner Recordation by M. L. Haiges, 2520S: Found brass capped monument witnessed by G.L.O. and B.L.M. bearing trees.

II. Found a 2 1/2 in. diam. iron pipe, protruding 3 ins. above the ground, with a 3 1/4 in. diam. B.L.M brass cap, mkd. as shown above.

from which:

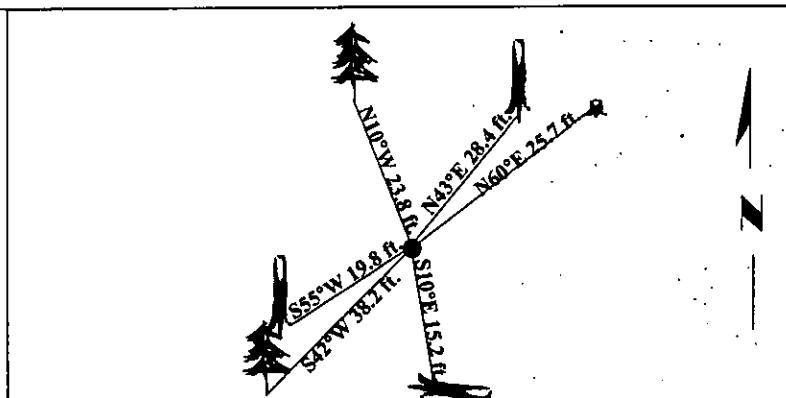
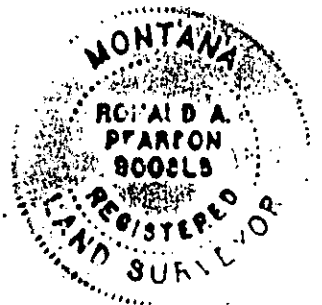
- A fir snag, 15 ins. diam., bears N43°E, 28.4 ft. dist., mkd. "1/4 S22 BT". (BLM-record)
- Rotten remains of a stump, bears N60°E, 25.7 ft. dist., no visible marks. (GLO-record)
- A down fir, 14 ins. diam., bears S10°E, 15.2 ft. dist., with a healed face. (BLM-record)
- A larch snag, 9 ins. diam., bears S55°W, 19.8 ft. dist., mkd. "14 S27 BT". (GLO-record)

III. Established two bearing trees:

- A larch, 26 ins. diam., bears S42°W, 38.2 ft. dist., mkd. "1/4 S27 BT".
- A fir, 9 ins. diam., bears N10°W, 23.8 ft. dist., mkd. "1/4 S22 BT".

Painted bearing trees and attached Land Survey Monument and Bearing Tree signs.

Magnetic Declination: 20° East.

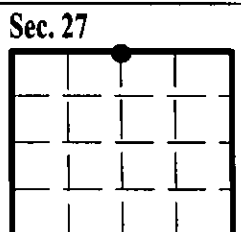


SKETCH OF CORNER

CERTIFICATION	
I, <u>Thomas Hommel</u>	certify the information shown herein is true and correct.
I, <u>Ronald A. Pearson</u>	certify that this Corner Record correctly represents work performed by me or under my direction in compliance with the "Corner Recordation Act" (70-22-101, et seq., M.C.A.)
Signature of Surveyor & Seal	
Date: <u>10/22/97</u>	
Reg. No.: <u>9008LS</u>	
Employer: <u>U.S. FOREST SERVICE</u>	

Office of Clerk and Recorder, County of Lincoln. This "corner record" was filed for record on 1-21-98 was noted on the cross-index plat and is assigned page No. 10067 in book No. _____

Carol M. Cummings Esq. RLB
County Official



● - corner this sheet