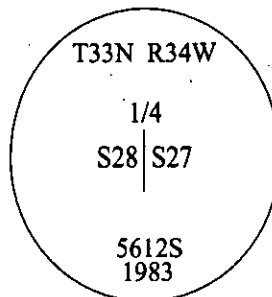


CERTIFIED CORNER RECORDATION

Corner 1/4 Secs. 27&28 T. 33N R. 34W P.M., MT Lincoln County

- I. 1903 G.L.O. Original Record by Allen B. Benedict: Set a sandstone, 15x10x5 ins., 10 ins. in the ground, for 1/4 sec. cor. mkd. "1/4" on W. face. Established two bearing trees.

1983 Certified Corner Recordation by Thomas C. Hill, 5612S: The 1/4 cor. of secs. 27 and 28, monumented with a sandstone, 14x9x5 ins., firmly set, 8 ins. in the ground, mkd. "1/4" on the W. face, and witnessed by the original bearing trees. At the corner point, set an iron post, 30 ins. long, 2 1/2 ins. diam., 26 ins. in the ground, with brass cap mkd. as shown.



Established two new bearing trees and buried the original stone alongside the iron post.

- II. Found a 2 1/2 in. diam. iron pipe, protruding 14 ins. above the ground, with a 3 1/4 in. diam. aluminum cap, mkd. as shown above.

from which:

A fir, 22 ins. diam., bears N63°E, 16.8 ft. dist., with a healed face. (1983-record)
A fir, 10 ins. diam., bears N45°W, 19.8 ft. dist., mkd. "14 S28 BT". (1983-record)

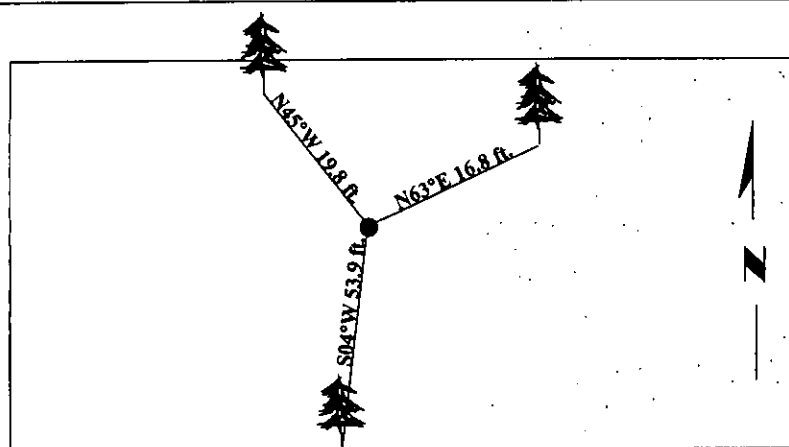
- III. Established one new bearing tree:

A fir, 7 ins. diam., bears S04°W, 53.9 ft. dist., mkd. "1/4 S28 BT".

Painted bearing trees and attached Land Survey Monument and Bearing Tree signs.



Magnetic Declination: 20° East.



SKETCH OF CORNER

CERTIFICATION

I, Thomas Hill
certify the information shown herein is true and correct.

I, Ronald A. Pearson
certify that this Corner Record correctly represents work performed by me or under my direction in compliance with the "Corner Recordation Act" (70-22-101, et seq., M.C.A.)

Ronald A. Pearson
Signature of Surveyor & Seal

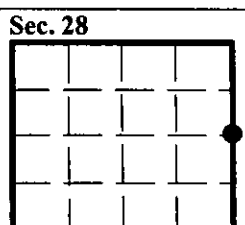
Date: 10/22/97

Reg. No.: 9008LS

Employer: U.S. FOREST SERVICE

Office of Clerk and Recorder, County of Lincoln This "corner record" was filed for record on 1-21-98 was noted on the cross-index plat and is assigned page No. 10066 in book No. _____

Coral M. Cumming by SJB
County Official



● - corner this sheet

Cross Index No. T-13 T. 33N R. 34W P.M., MT