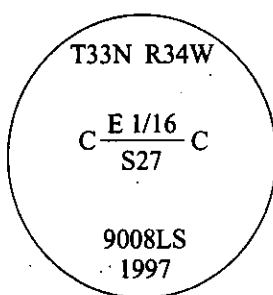


CERTIFIED CORNER RECORDATION

Corner CE 1/16 Sec. 27 T. 33N R. 34W P.M., MT Lincoln County

- I. No history found.
- II. No evidence found.
- III. Set by survey, a 3/4 in. diam. x 30 ins. long aluminum rod, 22 ins. in the ground, with a 3 1/4 in. diam. aluminum cap, mkd. as shown:



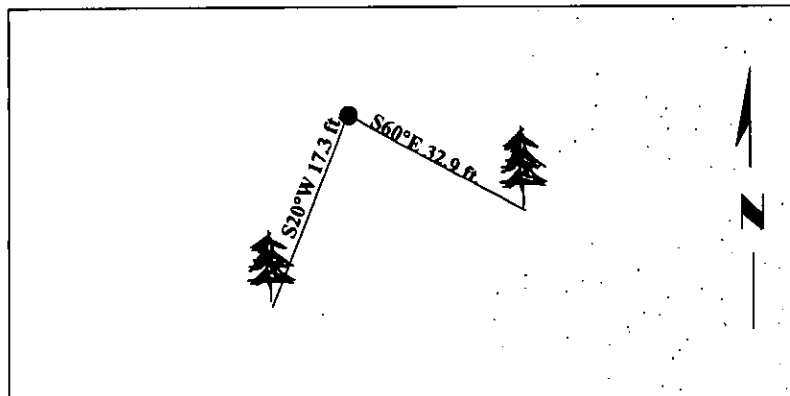
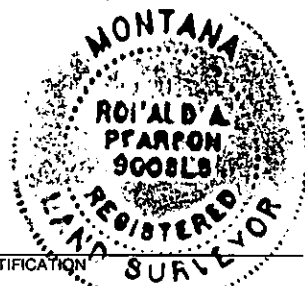
Established two bearing trees:

A larch, 10 ins. diam., bears S60°E, 32.9 ft. dist., mkd. "X" "BT".

A larch, 10 ins. diam., bears S20°W, 17.3 ft. dist., mkd. "CE 1/16 S27 BT".

Painted bearing trees and attached Land Survey Monument and Bearing Tree signs.

Magnetic Declination: 20° East.



SKETCH OF CORNER

CERTIFICATION
 I, Thomas Hommel
 certify the information shown herein is true and correct.
 I, Ronald A. Pearson
 certify that this Corner Record correctly represents work performed by me or under my direction in compliance with the "Corner Recordation Act" (70-22-101, et seq., M.C.A.)
Ronald A. Pearson
 Signature of Surveyor & Seal
 Date: 10/31/97
 Reg. No.: 9008LS
 Employer: U.S. FOREST SERVICE

Office of Clerk and Recorder, County of Lincoln. This "corner record" was filed for record on 1-21-98 was noted on the cross-index plat and is assigned page No. 10065 in book No.
Coral M. Cumming By SEL
 County Official

