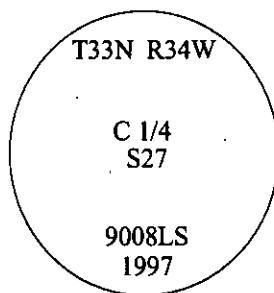


CERTIFIED CORNER RECORDATION

Corner C 1/4 Sec. 27 T. 33N R. 34W P.M., MT Lincoln County

- I. No history found.
- II. No evidence found.
- III. Set by survey, a 3/4 in. diam. x 30 ins. long aluminum rod, 26 ins. in the ground, with a 3 1/4 in. diam. aluminum cap, mkd. as shown:

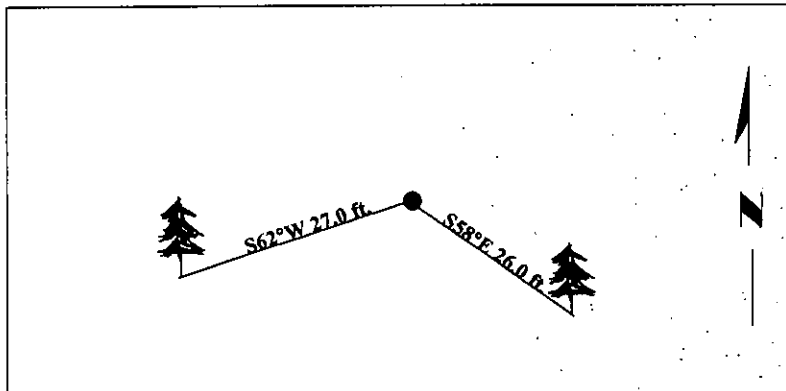


Established two bearing trees:

- A fir, 12 ins. diam., bears S58°E, 26.0 ft. dist., mkd. "C 1/4 S27 BT".
- A cedar, 20 ins. diam., bears S62°W, 27.0 ft. dist., mkd. "C 1/4 S27 BT".

Painted bearing trees and attached Land Survey Monument and Bearing Tree signs.

Magnetic Declination: 20° East.



SKETCH OF CORNER



I, Thomas Hommel
certify the information shown herein is true and correct.

I, Ronald A. Pearson
certify that this Corner Record correctly represents work performed by me or under my direction in compliance with the "Corner Recordation Act" (70-22-101, et seq., M.C.A.)

Ronald A. Pearson
Signature of Surveyor & Seal

Date: 10/29/97

Reg. No.: 9008LS

Employer: U.S. FOREST SERVICE

Office of Clerk and Recorder, County of Lincoln. This "corner record" was filed for record on 1-21-98 was noted on the cross-index plat and is assigned page No. 10063 in book No. _____

Carol M. Cummings
County Official

