

CERTIFIED CORNER RECORD

Corner: S 1/4 S 31 Twp. 33 N., R. 33 W., P.M.M. Lincoln County

Record :

1903 GLO Records by Allen Benidict

Set a sand stone 18 X 15 X 4 inch 12 inch in the ground, for standard 1/4 sec cor. Marked S.C. 1/4 on N face.

For Which:

A Tamarack, 6 inch DBH bears N 13° E, 49 lks. distance, marked 1/4 S 31 BT.

A Pine, 6 inch DBH bears N 51° 45 ' W., 3.5 lks. distance marked 1/4 s.31 BT.

Found Evidence :

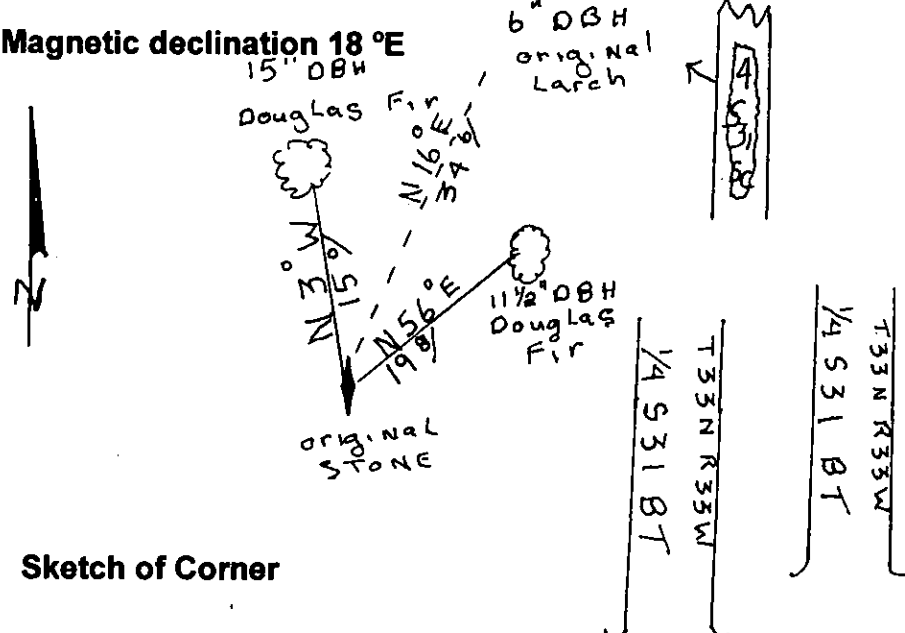
Original stone and original 6 inch DBH Larch bearing Tree fallen over, scribing still legible.

Perpetuation :

Established the following two new bearing trees from which a 15 inch DBH Douglas Fir scribed Twp.33 N., R. 33., W 1/4 S 31 BT Bears N 3° W 15 ft Distance.

A 11 1/2 inch DBH Douglas Fir scribed Twp. 33 N., R. 33W., 1/4 S 31 BT Bears N 56°E 19.8 ft distance.

Painted 6 inch wide band and attached warning tree and bearing tree signs to both trees.



Sketch of Corner

CERTIFICATION

I, George Clark
certify the information shown herein is true and correct

Signature of General Party: *George Clark*

I, **KENNETH E. DAVIS**
certify that this Corner Record correctly represents work performed
Me or under my direction in compliance with the "Corner Record
Act"

(7002-10 et seq., 75 O.S.)

Signature of Surveyor & Seal: *Kenneth E. Davis*

Date: *7-21-80* Reg. No. **4975-S**

Employer: Davis Surveying, Inc.

Office of Clerk and Recorder, County of Lincoln
This "corner record" was filed for record on Jan 3, 2001 **10464**
was noted on the cross-index plat and is assigned page No. _____
In book No. _____ Coral M. Cumming By DB
County Official

