

## INSTRUCTIONS

1. Original and/or subsequent record used to evaluate the corner position.
2. Description of evidence found, note discrepancies in the record, state method of establishing lost or obliterated corners.
3. Description of monument and accessories set to perpetuate the corner position.
4. Sketch of corner, show all pertinent data which can best be shown in a sketch example, corner marking, topography ties, position of accessories, etc.
5. Certification must be signed and sealed by Land Surveyor registered in the State of Montana.
6. Fill in Cross Index & Section Diagram at bottom of sheet.

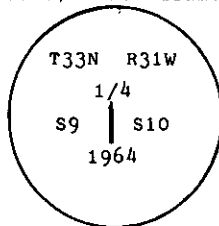
## CERTIFIED CORNER RECORDATION

Corner E. 1/4 Cor. of Secs. 9 T. 33 N. R. 31 W. P.M.M. Lincoln County

- I. 1903 original G.L.O. record by Fessensen and Rannie Y. Lyman: Set a limestone, 14x8x6 ins., 9 ins. in the ground, for 1/4 sec. cor., mkd. 1/4 on W. face, from which:

A fir, 16 ins. diam., bears S67°E, 74 lks. dist., mkd. 1/4 S10 B.T.  
A fir, 10 ins. diam., bears S25°W, 64 lks. dist., mkd. 1/4 S9 B.T.

1964 remonumentation by Gerald F. Pittman: At the corner point set a 2 1/2 ins. diam. iron post 10 ins. in the ground, to bedrock, and in a mound of stone, 4 ft. diam., to top, with brass cap mkd.



from which:

The remains of the old bearing trees:

A fir, 24 ins. diam., bears S67°E, 74 lks. dist., mkd. with an overgrown blaze.  
A stump hole, bears S25°W, 64 lks. dist.

The new bearing tree:

A fir, 12 ins. diam., bears S72°W, 83 lks. dist., mkd 1/4 S9 B.T.

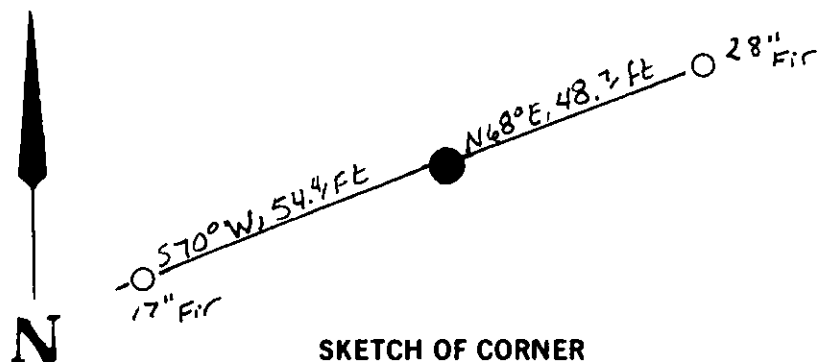
Buried the original stone alongside the iron post.

- II. Found a 3 1/2 ins. diam., B.L.M. brass cap on a 2 1/2 ins. diam., iron pipe 6 ins. above ground firmly set, surrounded by a collar of stone 3 ft. diam., mkd. as shown, from which:

A fir, 28 ins. diam., bears N68°E, 48.7 ft. dist., healed face.  
A fir, 17 ins. diam., bears S70°W, 54.4 ft. dist., healed face.

- III. Painted a red band around each bearing tree and attached Land Survey Monument and Bearing Tree signs.  
No guard post set.

Magnetic Declination: 20° East.

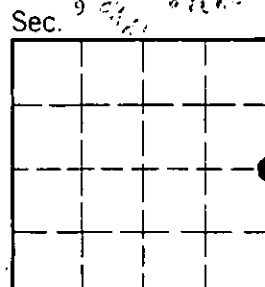


SKETCH OF CORNER

## CERTIFICATION

I, Kenneth Kern  
certify the information shown herein is true and correct.  
Kenneth Kern  
Signature Ground Party Chief  
I, Alvah F. Hughes  
certify that this Corner Record correctly represents work performed  
by me or under my direction in compliance with the Montana  
Recordation Act" (70-22-101, et seq., M.C.A.)  
Alvah F. Hughes  
Signature of Surveyor & Seal  
Date: 1/3/94 Reg. No. 7322LS  
Employer: U.S. FOREST SERVICE

Office of Clerk and Recorder, County of Lincoln. This "corner  
record" was filed for record on Jan 31, 1994  
was noted on the cross-index plat and is assigned page No. 6150, in  
book No. Coral M. Cumming By DB  
County Official



• - corner this sheet

G-13 Cross Index No. 33 N 31 W T. PMM

# INSTRUCTIONS TO SURVEYORS FOR COMPLETION OF CERTIFIED CORNER RECORDATION FORMS

## I. ORIGINAL AND/OR SUBSEQUENT RECORD:

This item should describe or quote those portions of the original or subsequent record which were used in evaluating the corner position. The original record will usually be the General Land Office field notes. Subsequent record can come from several sources: Previously filed corner records, maps and plats, private and public records, etc. Some of the subsequent record, even though not in the public record, but known to have validity by the surveyor, may be quoted and appropriately noted.

The record data helps support the reestablished corner position because it clearly shows what history the surveyor based his corner position on. In some cases, however, the record may be unknown or not pertinent. A statement to that effect should appear on the corner record.

## II. DESCRIPTION OF EVIDENCE FOUND OR METHOD OF LOCATING CORNER POSITION:

This item will describe the original or subsequent record evidence found. If portions of the found evidence cannot be reconciled with the record, then the disregarded record should be noted, and, if possible, an opinion as to its cause narrated.

If no physical evidence of the original or subsequent monuments and accessories can be found, then the method used to reestablish the lost or obliterated corner (single proportion, fence intersection, parol evidence, terrain calls, centerline of road, etc.) shall be indicated.

## III. DESCRIPTION OF MONUMENTS AND ACCESSORIES SET TO PERPETUATE THE CORNER POSITION:

This item should list all details about the corner and its location which will help exclusively identify the corner position; including size and type of monument, how marked if not shown in sketch, and distinguishing topographic calls which help locate the corner. In many cases, instructions on how to find the corner should be included.

References or ties to other corners are optional and may be drawn on the face or back of the corner record form, or references to Certificate of Survey may be made. Separate drawings may be attached to the corner form.

If state plane coordinate values for the corner position are shown, then the control upon which they are based should be indicated.

## IV. SKETCH OF CORNER:

This item will usually show how a found or set corner is marked and may also show topography or accessory monuments found or set and their relation to the corner. There is no stipulated format; the sketch could be transcribed field note entries.

## V. CERTIFICATION:

The name and signature of the ground party chief is optional.

The Surveyor who performed or directed the field work which is depicted on the "Certified Corner Record" shall sign and affix his seal in the Certification.

The employer blank is optional but useful in tracking down original field note data or adjacent record if, in the future, questions arise about the corner.

## VI.

The Cross Index at the bottom of the page should be completed by the Surveyor. Only the single Township Index where the corner is filed shall be completed.

The lower righthand corner is a corner location diagram and should have the pertinent section filled in at the top and a closed circle indicating the appropriate corner position in the section filled in. This is intended to be an aid in searching the "Record" once it has been filed.