

INSTRUCTIONS

1. Original and/or subsequent record used to evaluate the corner position.
2. Description of evidence found, note discrepancies in the record, state method of establishing lost or obliterated corners.
3. Description of monument and accessories set to perpetuate the corner position.
4. Sketch of corner, show all pertinent data which can best be shown in a sketch example, corner marking, topography ties, position of accessories, etc.
5. Certification must be signed and sealed by Land Surveyor registered in the State of Montana.
6. Fill in Cross Index & Section Diagram at bottom of sheet.

CERTIFIED CORNER RECORDATION

Corner E 1/4 S32 T. 33N. R. 31W. P.M.M. Lincoln County

- I. 1904 GLO Retracement of 8th Standard Parallel: Set a slate stone, 24x12x10 ins., 18 ins. in the ground, for standard cor. of secs. 32 and 33, marked SC on N face; with 4 grooves on E. and 2 grooves on W. faces; from which

A cedar, 10 ins. diam., bears N58°E, 36 lks. dist., marked T33N R31W S33 BT.

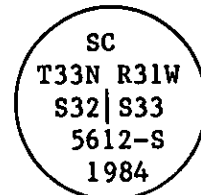
A cedar, 30 ins. diam., bears N70°W, 47 lks. dist., marked T33N R31W S32 BT.

- II. Found: Unset stone, marked as described in original notes, except an "X" is marked on top; from which

A cedar, 13 ins. diam., bears N56°E, 36 lks. dist., scribe visible.

A cedar, 34 ins. diam., bears N7°W (rcd: N70°W), 47 lks. dist., scribe visible.

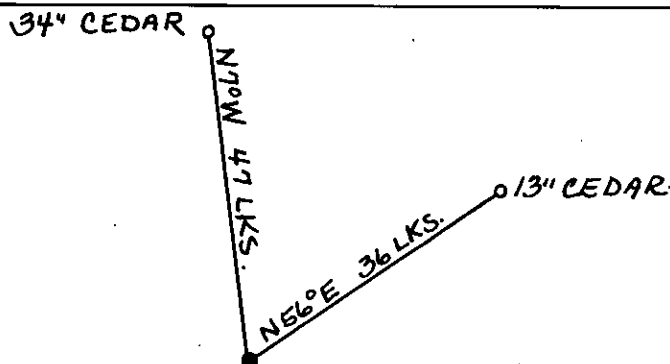
- III. Perpetuation: At the intersection of distances from the two bearing trees, set a 2½ in. diam. aluminum pipe, 30 ins. long, 25 ins. in the ground with an aluminum cap marked as shown:



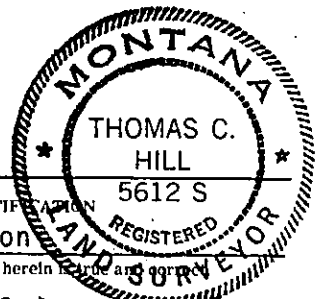
Painted red: 6 in. bands and scribe blazes, and posted "Bearing Tree" and "Survey monument" signs on bearing trees.

Bury the original stone alongside aluminum monument.

Closing Corner of secs. 1 & 6, T32N, Rs. 31 & 32W, bears East, 281.33 ft. dist.

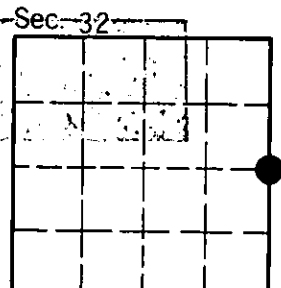


SKETCH OF CORNER



CERTIFICATION
I, Gary C. Crismon,
certify the information shown herein is true and correct.
Gary C. Crismon
Signature Ground Party Chief
I, Thomas C. Hill
certify that this Corner Record correctly represents work performed
by me or under my direction in compliance with the "Corner
Recordation Act" (70-22-101, et seq., M.C.A.)
Thomas C. Hill
Signature of Surveyor & Seal
Date: 1-25-85 Reg. No. 5612S
Employer: U.S.F.S.

Office of Clerk and Recorder, County of Lincoln This "corner
record" was filed for record on Jan 28, 1985
was noted on the cross-index plat and is assigned page No. 2950 in
book No. _____
Janet BT Siegel by Bill Buschhoff
County Official Deputy



INSTRUCTIONS TO SURVEYORS FOR COMPLETION OF CERTIFIED CORNER RECORDATION FORMS

I. ORIGINAL AND/OR SUBSEQUENT RECORD:

This item should describe or quote those portions of the original or subsequent record which were used in evaluating the corner position. The original record will usually be the General Land Office field notes. Subsequent record can come from several sources: Previously filed corner records, maps and plats, private and public records, etc. Some of the subsequent record, even though not in the public record, but known to have validity by the surveyor, may be quoted and appropriately noted.

The record data helps support the reestablished corner position because it clearly shows what history the surveyor based his corner position on. In some cases, however, the record may be unknown or not pertinent. A statement to that effect should appear on the corner record.

II. DESCRIPTION OF EVIDENCE FOUND OR METHOD OF LOCATING CORNER POSITION:

This item will describe the original or subsequent record evidence found. If portions of the found evidence cannot be reconciled with the record, then the disregarded record should be noted, and, if possible, an opinion as to its cause narrated.

If no physical evidence of the original or subsequent monuments and accessories can be found, then the method used to reestablish the lost or obliterated corner (single proportion, fence intersection, parol evidence, terrain calls, centerline of road, etc.) shall be indicated.

III. DESCRIPTION OF MONUMENTS AND ACCESSORIES SET TO PERPETUATE THE CORNER POSITION:

This item should list all details about the corner and its location which will help exclusively identify the corner position; including size and type of monument, how marked if not shown in sketch, and distinguishing topographic calls which help locate the corner. In many cases, instructions on how to find the corner should be included.

References or ties to other corners are optional and may be drawn on the face or back of the corner record form, or references to Certificate of Survey may be made. Separate drawings may be attached to the corner form.

If state plane coordinate values for the corner position are shown, then the control upon which they are based should be indicated.

IV. SKETCH OF CORNER:

This item will usually show how a found or set corner is marked and may also show topography or accessory monuments found or set and their relation to the corner. There is no stipulated format; the sketch could be transcribed field note entries.

V. CERTIFICATION:

The name and signature of the ground party chief is optional.

The Surveyor who performed or directed the field work which is depicted on the "Certified Corner Record" shall sign and affix his seal in the Certification.

The employer blank is optional but useful in tracking down original field note data or adjacent record if, in the future, questions arise about the corner.

VI.

The Cross Index at the bottom of the page should be completed by the Surveyor. Only the single Township Index where the corner is filed shall be completed.

The lower righthand corner is a corner location diagram and should have the pertinent section filled in at the top and a closed circle indicating the appropriate corner position in the section filled in. This is intended to be an aid in searching the "Record" once it has been filed.