

CERTIFIED CORNER RECORDATION

Corner N 1/16 S20|S21 T. 33 N. R. 31 W. P.M.M. Lincoln County

I. Record: None

II. Found: No record monuments found.

III. Perpetuation: At the corner point, determined by survey, set a 5/8 ins. diam. steel rebar 30 ins. long, 29 ins. in the ground, with a 3 1/4 ins. diam. Aluminum cap marked as shown below from which:

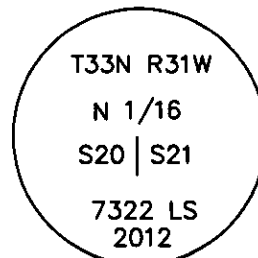
A Douglas fir 17 ins. diam., bears S79°E, 4.25 ft. dist., scribed N 1/16 S21 BT.

A Douglas fir, 13 ins. diam., bears N40°W, 14.70 ft. dist., scribed N 1/16 S20 BT.

Painted faces and 6 in. wide red bands to all bearing trees and attached Land Survey Monument and Bearing Tree signs.

Magnetic declination: 18° East

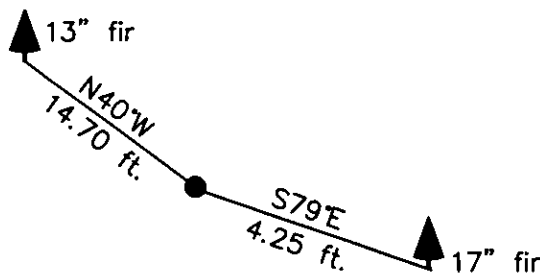
Equipment used: Hand compass and loggers tape



NOTE: Refer to Certificate of Survey No. 4168 Lincoln County Records for additional survey information.

Kootenai Surveyors Inc., 314 California Av., Libby, MT. 59923 (406) 293-4354

Noble -Sec. 21



SKETCH OF CORNER

CERTIFICATION

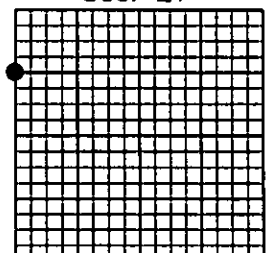
I, Levi Powell
certify the information shown herein is true and correct.
[Signature]
Signature of Land Party Chief
I, Alvan F. Hughes
certify that this Corner Record correctly represents work performed by me or under my direction in compliance with the Corner Recordation Act (70-22-101, et seq., M.C.A.)
[Signature]
Signature of Surveyor
Date: 08/13/2012 Reg. No. 7322LS
Employer: Kootenai Surveyors Inc.

Office of Clerk and Recorder, County of Lincoln This "corner record" was filed for record on _____

was noted on the cross 240344 BOOK: CCR CC&R'S PAGE: 11982 Page: 1
STATE OF MONTANA LINCOLN COUNTY
RECORDED: 08/21/2012 12:50 KOI: CC&R'S
TAMMY D. LAUER CLERK AND RECORDER
FEE: \$0.00 BY: *[Signature]*
FOR FILED
Cross Index No. 0-9 T. 33N R. 31W P.M., MT

Adopted July 1, 1981, Montana Board of Professional Engineers & Land Surveyors

Sec. 21



• corner this sheet

82.

