

CERTIFIED CORNER RECORDATION

Corner CN 1/16 S21 T 33 N. R. 31 W. P.M.M. Lincoln County

I. Record: None

II. Found: No record monuments found.

III. Perpetuation: At the corner point, determined by survey, set a 5/8 ins. diam. steel rebar 30 ins. long, 29 ins. in the ground, with a 3 1/4 ins. diam. Aluminum cap marked as shown below from which:

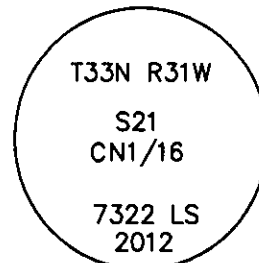
A Douglas Fir, 13 ins. diam., bears N39°E, 10.20 ft. dist., scribed CN 1/16 S21 BT.

A Douglas Fir, 11 ins. diam., bears S7°W, 14.00 ft. dist., scribed CN 1/16 S21 BT.

Painted faces and 6 in. wide red bands to all bearing trees and attached Land Survey Monument and Bearing Tree signs.

Magnetic declination: 18° East

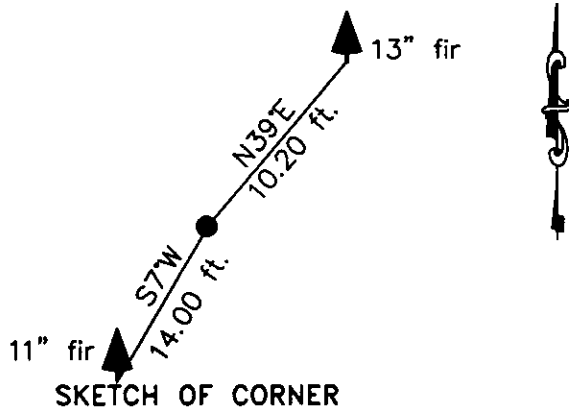
Equipment used: Hand compass and loggers tape



NOTE: Refer to Certificate of Survey No. 4168 Lincoln County Records for additional survey information.

Kootenai Surveyors Inc., 314 California Av., Libby, MT. 59923 (406) 293-4354

Noble -Sec. 21



CERTIFICATION

I, Kelly Rooney
certify the information shown herein is true and correct.

Kelly Rooney
Signature of Surveyor

I, Alvah F. Hughes
certify that this Corner Recordation was performed by me or under my direct supervision with the "Corner Recordation" (M.C.A.)

Alvah F. Hughes
Signature of Surveyor

Date: 08/13/2012 No. 7322LS

Employer: Kootenai Surveyors Inc.

Office of Clerk and Recorder, County of Lincoln This "corner

record" was filed for record

was noted on the cross STATE OF MONTANA LINCOLN COUNTY

book No. 240343 BOOK: CCR CC&R'S PAGE: 11981 Pages: 2

RECORDED: 08/21/2012 12:45 KOI: CC&R'S

TAMMY D. LAUER CLERK AND RECORDER

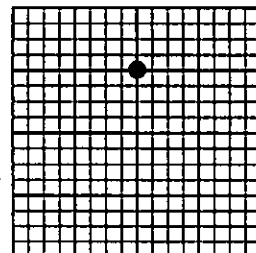
FEE: \$0.00

FOR: KOOTENAI SURVEYORS INC. P.O. BOX 393, LIBBY, MT 59923

Cross Index No. 0 11 T. 33N R. 31W P.M., MT

Adopted July 1, 1981, Montana Board of Professional Engineers & Land Surveyors

Sec. 21



• corner this sheet

214.

