

CERTIFIED CORNER RECORDATION

Corner NW Cor. S 15 T. 33 N. R. 31 W. P.M.M. LINCOLN County

I. Record: 1903 original GLO survey by G. Fessensen and R. Lyman: set a stone and establish four bearing trees.

1964 BLM Remoumentation by G. Pittman: Set an iron post, 30 ins. long, 2 1/2 ins. diam., 26 ins. in the ground, with brass cap mkd. as shown below from which:

- A larch, 8 ins. diam., bears N. 65°E., 39 lks. dist., mkd. T33N R31W S10 BT.
- A larch, 6 ins., diam., bears S. 3°E., 22 lks., dist., mkd. T33N R31W S15 BT.
- A pine, 8 ins. diam., bears S. 59°W., 33 lks., dist., mkd. T33N R31W S16 BT.
- A pine, 6 ins. diam., bears N. 44°30 W., 24 lks. dist., mkd. T33N R31W S9 BT.

1993 Certifed Corner Recordation by A.F.Hughes 7322LS.

II. Found: A 3 1/4 ins. diam. BLM brass cap on a 2 1/2 in. diam. iron pipe firmly set from which:

- A larch, 11 ins. diam., bears N. 65°E., 25.70 ft. with overgrown face.
- A larch, 13 ins. diam., bears S. 3°E., 14.50 ft. dist., with overgrown face.
- A pine, 9 ins. diam., bears S. 59°W., 21.80 ft. dist., with visible face.

III. Perpetuation: Establish one bearing tree described below:

A fir, 10 ins. diam., bears N. 4°W., 16.10 ft. dist., mkd. T33N R31W S9 BT.

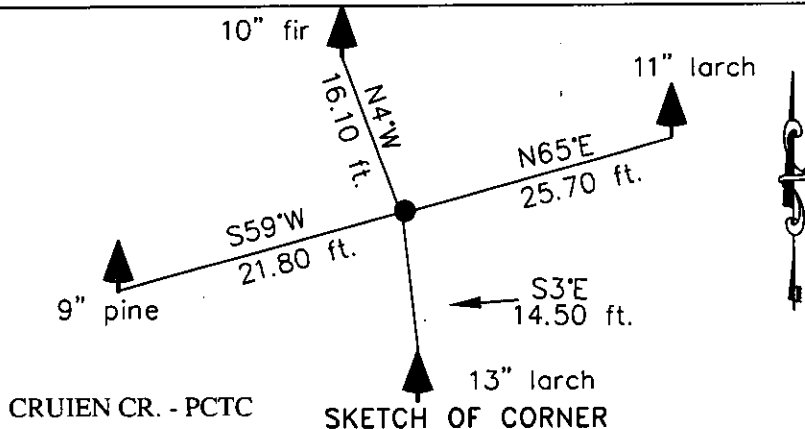
Painted faces and 6 in. wide red bands to all bearing trees and attached Bearing tree and Land Survey Monument signs.

Set a steel post on line 3.0 ft. East of corner with attached Land Survey Monument and Property Boundary stickers.

Magnetic declination: 18° East

Equipment used: Hand compass and loggers tape

Kootenai Surveyors Inc., 314 California Av., Libby, MT. 59923 (406) 293-4354



CERTIFICATION

I, Levi Powell
certify the information shown herein is true and correct.
Levi Powell
Signature Ground Party Chief

I, Alvah F. Hughes
certify that this Corner Record correctly represents work performed by me or under my direction in compliance with the "Corner Recordation Act" (70-22-101, et seq., M.C.A.)
Alvah F. Hughes
Signature of Surveyor & Seal

Date: 07/24/2007 Reg. No. 7322-LS
Employer: Kootenai Surveyors Inc.

Office of Clerk and Recorder, County of Lincoln. This "corner

record" was filed for record on

was noted on the cross-index

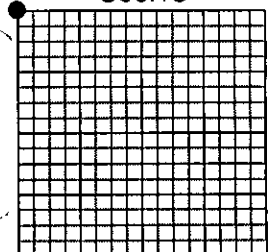
book No. _____

205586 BOOK: CCR CC&R'S PAGE: 11110 Pages: 1
STATE OF MONTANA LINCOLN COUNTY
RECORDED: 08/27/2007 9:29 KOI: CC&R'S
TAMMY D. LAUER CLERK AND RECORDER
FEE: \$0.00 BY: *Levi Powell*
TO: KOOTENAI SURVEYORS INC. P.O. BOX 393, LIBBY, MT 59923

Cross Index No. J 13 T. 33N R. 31W P.M., MT

Adopted July 1, 1981, Montana Board of Professional Engineers & Land Surveyors

Sec.15



• corner this sheet

1000
1000

1000