

CERTIFIED CORNER RECORDATION

Corner SE Cor. S15 T 33 N. R. 31 W. P.M.M. LINCOLN County

I. Record: 1903 original GLO survey by G. Fessensen and R. Lyman: A tamarack, 14 ins. diam. for corner, and establish four bearing trees.

1970 BLM Remoumentation by J. French: Set an iron post, 30 ins. long, 2 1/2 ins. diam., 26 ins. in the ground, with brass cap mkd. as shown below from which:

- A pine, 6 ins. diam., bears N. 52°15'E., 8 lks. dist., mkd. T33N R31W S14 BT.
- A pine, 6 ins., diam., bears S. 25°30'E., 23 lks., dist., mkd. T33N R31W S23 BT.
- A pine, 6 ins. diam., bears S. 86°W., 36 lks., dist., mkd. T33N R31W S22 BT.
- A pine, 6 ins. diam., bears N. 72°30 W., 22 lks. dist., mkd. T33N R31W S15 BT.

II. Found: A 3 1/4 ins. diam. BLM brass cap on a 2 1/2 in. diam. iron pipe firmly set from which:

- A pine, 12 ins. diam., bears N. 52°E., 5.30 ft. with visible scribes.
- A pine, 8 ins. diam., bears S. 25°E., 15.20 ft. dist., with visible scribes.
- A pine, 13 ins. diam., bears S. 66°W., 23.80 ft. dist., with visible scribes.
- A pine, 11 ins. diam., bears N. 72°W., 14.50 ft. dist., with visible scribes.

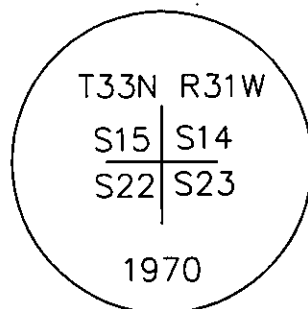
III. Perpetuation:

Painted faces and 6 in. wide red bands to all bearing trees and attached Bearing tree and Land Survey Monument signs.

Set a steel post on line 3.0 ft. North of corner with attached Land Survey Monument and Property Boundary stickers.

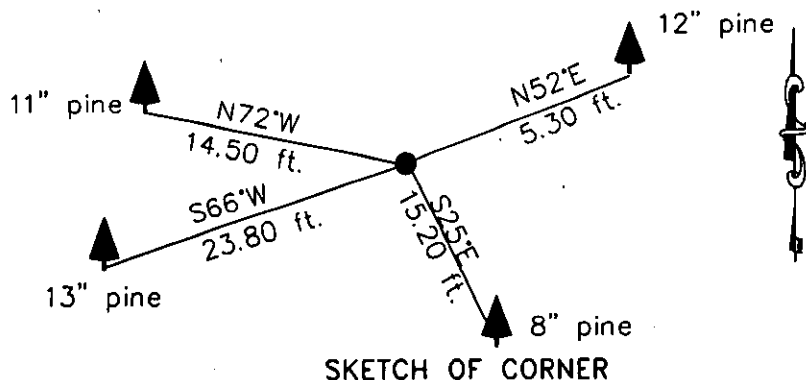
Magnetic declination: 18° East

Equipment used: Hand compass and loggers tape



Kootenai Surveyors Inc., 314 California Av., Libby, MT. 59923 (406) 293-4354

CRUIEN CR. - PCTC



CERTIFICATION MONTANA

I, Levi Powell
 certify the information shown herein is true and correct.
Levi Powell
 Signature Ground Party Chief / S22LS

I, Alvah F. Hughes
 certify that this Corner Record correctly represents work performed by me or under my direction in compliance with the "Corner Recordation Act" (70-22-101, et seq. M.C.A.)
Alvah F. Hughes
 Signature of Surveyor & Seal

Date: 07/24/2007 Reg. No. 7322-LS
 Employer: Kootenai Surveyors Inc.

Office of Clerk and Recorder, County of Lincoln This "corner

record" was filed for record on

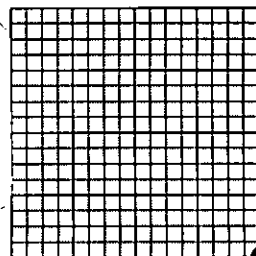
was noted on the cross-index book No. _____

205582 BOOK: CCR CC&R'S PAGE: 11106 Pages: 1
 STATE OF MONTANA LINCOLN COUNTY
 RECORDED: 08/27/2007 9:20 KOI: CC&R'S
 TAMMY D. LAUER CLERK AND RECORDER
 FEE: \$0.00 BY: Francine D. Dwyer
 TO: KOOTENAI SURVEYORS INC. P.O. BOX 393, LIBBY, MT 59923

Cross Index No. N 17 T. 33N R. 31W P.M., MT

Adopted July 1, 1981, Montana Board of Professional Engineers & Land Surveyors

Sec.15



• corner this sheet

1941

1942