

# CERTIFIED CORNER RECORDATION

Corner NW Cor. S31 T. 33 N. R. 31 W. P.M.M. Lincoln County

I. Record: 1904 original GLO survey by A. Fessenden and R. Lyman : Set a Shale stone 12x12x4 ins. 4 ins. in the ground, for Cor. of Secs. 25,30,31 and 36 marked with 1 notch on the S. and 5 notches on N. edge from which:

- A Pine 8 ins. diam., bears N. 13°E., 36 lks. (23.76 ft.) dist., mkd.  
T. 33 R.31 W. S30 BT.
- A Pine 8 ins. diam., bears S. 62°30'E., 21 lks. (13.86 ft.) dist., mkd.  
T.33 R. 31 W. S 31 BT.
- A Tamarack 10 ins. diam., bears S. 29°W., 20 lks. (13.20 ft.) dist., mkd.  
T.33 N. R. 32 W. S 36 BT.
- A Pine 10 ins. diam., bears N.8°30' W., 67 lks. (44.22 ft.) dist., mkd.  
T.33 N. R. 32 W. S 25 BT.

1976 BLM Remonumentation by French: Set an iron post 30 ins. long, 2 1/2 ins. diam 24 ins. in the ground, with brass cap mkd. as show below from which:

II. Found: A 3 1/4 in. diam. brass cap on a 2 1/2 in. diam. iron pipe firmly set which:

- A Pine 6 ins. diam., bears N. 69°W., 10.56 ft. dist. with visible scribes.
- A Pine 7 ins. diam., bears N.44°30'E., 24.42 ft. dist. with visible scribes.

III. Perpetuation: We establish 2 bearing trees described below:

- A pine 6 ins. diam., bears S. 51°E., 22.60 ft. dist., mkd. T33N R31W S31 BT.
- A Larch 8 ins. diam., bears S. 44°W., 43.70 ft. dist., mkd. T33N R32W S36 BT.

Set a steel post on line 3 ft. E. with U.S.F.S Land Survey monument and Property Boundary stickers.

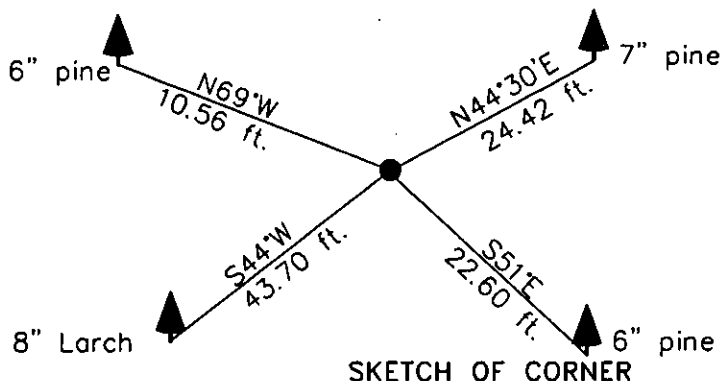
Painted faces and 6 in. wide red bands to all bearing trees and attached Land Survey Monument and Bearing Tree signs.

Magnetic declination: 18° East

Equipment used: Hand compass and loggers tape

Kootenai Surveyors Inc., 314 California Av., Libby, MT. 59923 (406) 293-4354

MT. TOM PCTC



CERTIFICATION -

I, Mike Tester  
certify the information shown herein is true and correct.

[Signature]  
Signature Ground Party Chief

I, Alvah F. Hughes  
certify that this Corner Record correctly represents work performed by me or under my direction in compliance with the Corner Recordation Act (70-22-101, et seq., M.C.A.)

[Signature]  
Signature of Surveyor & Seal

Date: 10/20/2006 Reg. No. 7322-JLS

Employer: Kootenai Surveyors Inc.

Office of Clerk and Recorder, County of Lincoln This "corner

record" was filed for record on                     

was noted on the cross-index plat STATE OF MONTANA LINCOLN COUNTY

book No.                     

200858 BOOK: CCR CC&R'S PAGE: 11059 Pages: 1

RECORDED: 02/07/2007 9:17 KOI: CC&R'S

TAMMY D. LAUER CLERK AND RECORDER

FEE: \$0.00

BY: [Signature]

TO: FILED

Cross Index No. V 01 T. 33N R. 31W P.M., MT

Adopted July 1, 1981, Montana Board of Professional Engineers & Land Surveyors

• corner this sheet



RECEIVED  
JAN 11 1964  
FBI - NEW YORK  
COMMUNICATIONS SECTION