

CERTIFIED LAND CORNER RECORDATION
(REFERENCE FSM 7153.53)

DESCRIPTION OF CORNER EVIDENCE FOUND, AND ORIGINAL RECORD (IF KNOWN)

GLO RECORD: SET A SLATE STONE, 16X10X7 INS., 6 INS. IN THE GROUND & IN A MOUND OF STONE, FOR 1/4 SEC COR FOR SEC 12, MKD 1/4 S 12 ON W FACE, FROM WHICH: A FIR, 10" DIAM. BEARS S 57°30' W., 62 LKS. DIST. MKD. 1/4 S 12 BT.
A FIR, 12" DIAM. BEARS N 49° W., 112 LKS. DIST., MKD. 1/4 S 12 BT.

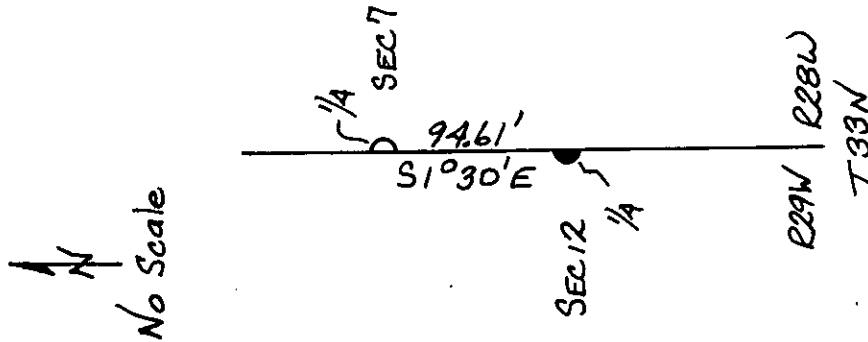
FOUND: A 15"X5"X6" SLATE STONE OUT OF GROUND WITH "1/4" FACING UP.
FROM WHICH: A 12" FIR BEARS S 57° W., 40.9' SCRIBING VISIBLE
A 14" FIR STUMP BEARS N 49° W., 73.9'

DESCRIPTION OF MONUMENT AND ACCESSORIES ESTABLISHED TO PERPETUATE THE ORIGINAL LOCATION OF THIS CORNER:

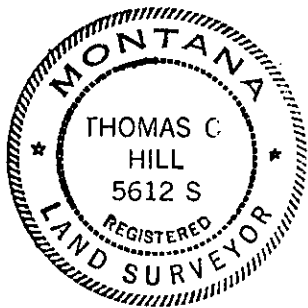
RESET ORIGINAL STONE IN PLACE AS DETERMINED BY Date of work: 9/30/80
THE INTERSECTION OF DISTANCES FROM FOUND ORIG. BEARING TREES.
FROM WHICH: A 9" FIR BEARS S 45° W., 6.2 FT. MARKED "1/4 S 12 BT"
A 12" PINE BEARS N 68° W., 22.7 FT MARKED "X BT"

ATTACHED LOCATION POSTER TO A 13" FIR WHICH BEARS N 18° W., 2.8 FT.

SKETCH, WITH COURSE AND DISTANCE TO ADJACENT CORNERS IF DETERMINED IN THIS SURVEY.
(MAY SKETCH OR PASTE REPRODUCTION ON REVERSE SIDE.)



Surveyor's Seal



I, ANTHONY J. BACHMAN
certify that the information shown herein is true and correct.

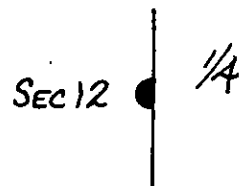
Anthony J. Bachman
Signature of Ground Party Chief

I, THOMAS C. HILL
certify that I have carefully performed or reviewed the work done on the diagrammed corner as reported on this recordation form and approve the same.

Thomas C. Hill
Signature of Surveyor

DIAGRAM OF CORNER:

1. T33N R29W



● = Corner recorded on the sheet

5612S
Registration Number

Office of Clerk and Recorder, County of Lincoln

This "corner record" was filed for record on the 13th day of March, 1981, was noted on the cross-index plat and is assigned page No. 1018, in book No. 1

Charles L. Vaughn, by Betty Bell,
County Official

Cross Index No. G-25 T. 33N R. 29W Mer.

