

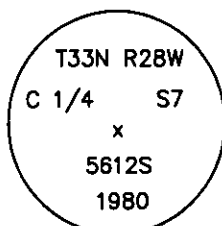
CERTIFIED CORNER RECORDATION

Corner C 1/4 Sec. 7 T. 33 N. R. 28 W. P.M.M. LINCOLN County

- I. Record: 1981 C.O.S. #886 by T. C. Hill, establishes the C 1/4 of section 7, T.33N., R.28W., P.M., MT.

1980 corner card by T.C. Hill:

No previous record of monumentation. Set a 2 1/2" x 30" alum. pipe, approx. 24" in the ground with alum. cap marked as shown. Collar of stone. From which:



A 10" Western Larch, bears S6°W, 17.6 ft., marked C 1/4 S7 BT.

A 7" L. P. Pine, bears S80°E, 3.4 ft., marked X BT.

Attached location poster to an 8" L. P. Pine which bears S49°W, 16.0 ft.

- II. Found: 2 1/2 in. diam. aluminum pipe, 4 ins. above ground, with a 3 1/4 in. diam. aluminum cap marked as shown above.

From which:

A larch, 13 ins. diam., S6°W, 17.8 ft., marked with a healed face.

A dead and down pine, 8 ins. diam., N80°W, 3.4 ft., with visible scribe marks.

- III. Established one new bearing tree.

A fir, 10 ins. diam., N54°E, 30.0 ft., marked T33N R28W C 1/4 S7 BT.

Attached Bearing Tree and Land Survey Monument signs to the bearing trees. Painted red bands around the bearing trees.

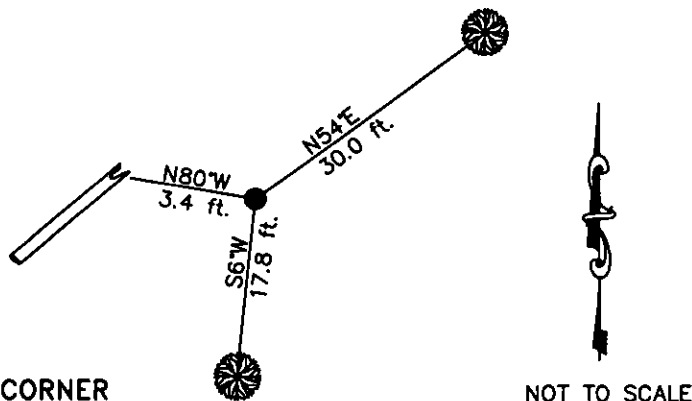
Date of Fieldwork: 9/11/2002

Survey crew: Steve Boyer, Tom Hommel

Magnetic declination: 20° East assumed

Equipment used: Hand compass and loggers tape

U.S. Forest Service, Supervisors Office, 1101 Hwy. 2 West, Libby, MT 59923 (406) 293-6211



CERTIFICATION

I, Steven A. Boyer, 9760N 54W,
certify the information shown herein is true and correct.

Roger O. Green
Signature of Ground Party Chief

I, Roger O. Green, 13769LS,
certify that this Corner Record correctly represents work
performed by me or under my direction in compliance with
the "Corner Recordation Act" (70-32-101 N.E. 1st, M.C.A.)

Roger O. Green
Signature of Surveyor & Recorder

Date: 09/11/2002 Reg. No. 13769LS

Employer: U. S. Forest Service

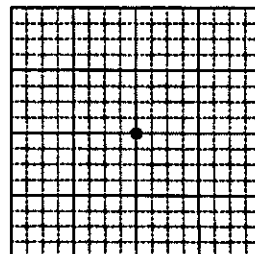
Office of Clerk and Recorder, County of Lincoln This "corner

record" was filed for record on Jan 30, 2003

was noted on the cross-index plat and is assigned page No. 10585, in

book No. Carol M. Cummins By RB
County Official

Sec. 7



Cross Index No. G-03 T. 33N. R. 28W. P.M., MT

Adopted July 1, 1981, Montana Board of Professional Engineers & Land Surveyors

• corner this sheet

