

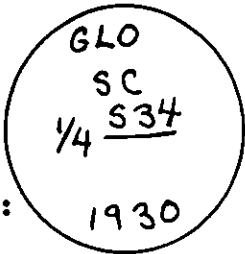
CERTIFIED LAND CORNER RECORDATION
(REFERENCE FSM 7153.53)

DESCRIPTION OF CORNER EVIDENCE FOUND, AND ORIGINAL RECORD (IF KNOWN)

1930 G.L.O. record, from found original evidence:

Set an iron post, 3 ft. long, 1 in. diam., 28 ins. in ground with brass cap marked as shown:

From which: A 12" larch bears N42°E., 43 lks.
A 10" larch (no bearing), 50 lks.



Found a 1" steel pipe appr. 18" above ground with brass cap marked as shown: Collar of stone.

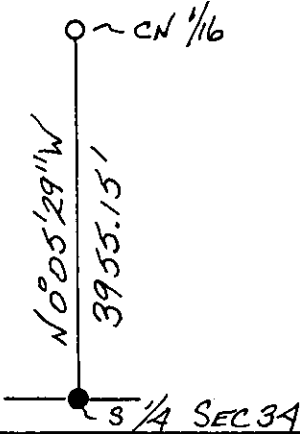
From which: A 14" douglas fir bears N51°W., 33.8 ft. Healed face, alive and well.
A 16" fir bears N54°E., 31.7 ft. Healed face, alive and well.

DESCRIPTION OF MONUMENT AND ACCESSORIES ESTABLISHED TO PERPETUATE THE ORIGINAL LOCATION OF THIS CORNER:

Date of work: 8/19/80

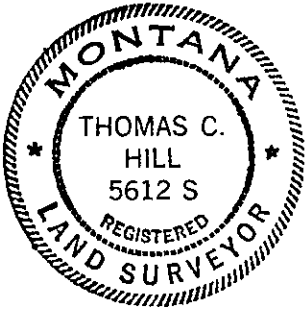
Attached location poster to a 6" fir which bears N20°E., 8.9 ft.
Painted red bands around bearing trees.

SKETCH, WITH COURSE AND DISTANCE TO ADJACENT CORNERS IF DETERMINED IN THIS SURVEY. (MAY SKETCH OR PASTE REPRODUCTION ON REVERSE SIDE.)



No. Scale

Surveyor's Seal



I, Anthony J. Bachman
certify that the information shown herein is true and correct.

Signature of Ground Party Chief

Thomas C. Hill

I, _____
certify that I have carefully performed or reviewed the work done on the diagrammed corner as reported on this recordation form and approve the same.

Signature of Surveyor

DIAGRAM OF CORNER:

N. T33N R28W
1 SEC 34
S 1/4

● = Corner recorded on the sheet

5612-S
Registration Number

Office of Clerk and Recorder, County of Lincoln
This "corner record" was filed for record on the 9th day of February 1981, was noted on the cross-index plat and is assigned page No. 1008, in book No. 1
Eleanor L. Toupin, by Betty Sue, Deputy
County Official
Cross Index No. 2-15 T. 33N R. 28W Mer.

the 1990s, the number of people in the world who are undernourished has declined from 760 million to 600 million. The number of people who are malnourished has declined from 1.1 billion to 800 million. The number of people who are obese has increased from 100 million to 300 million. The number of people who are overweight has increased from 100 million to 300 million. The number of people who are obese and overweight has increased from 100 million to 300 million. The number of people who are obese and overweight has increased from 100 million to 300 million.

the 1990s, the number of people in the world who are undernourished has declined from 760 million to 600 million. The number of people who are malnourished has declined from 1.1 billion to 800 million. The number of people who are obese has increased from 100 million to 300 million. The number of people who are overweight has increased from 100 million to 300 million. The number of people who are obese and overweight has increased from 100 million to 300 million. The number of people who are obese and overweight has increased from 100 million to 300 million.