

CERTIFIED LAND CORNER RECORDATION
(REFERENCE FSM 7153.53)

DESCRIPTION OF CORNER EVIDENCE FOUND, AND ORIGINAL RECORD (IF KNOWN)

Original G.L.O. record: Marked an "X", and marked a "1/4" on the N. side of the X, on a 5'x2'x2' granite ledge.

From which: A 10" pine bears S39°E., 5 lks. Marked: "1/4 S7 BT."
A 14" pine bears N28°W., 22 lks. Marked: "1/4 S6 BT."

Found a 4'x1.5'x1' slab of granite with an "X", and a "1/4" marked on N. face.

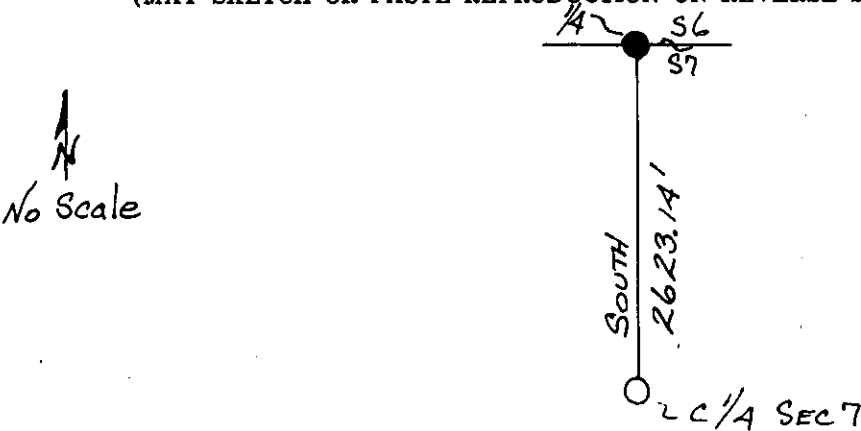
From which: A 12" pine bears S40°E., 3.8 ft. Scribing visible, alive and well.
A 14" pine bears N28°W., 13.8 ft. Healed face, alive and well.

DESCRIPTION OF MONUMENT AND ACCESSORIES ESTABLISHED
TO PERPETUATE THE ORIGINAL LOCATION OF THIS CORNER:

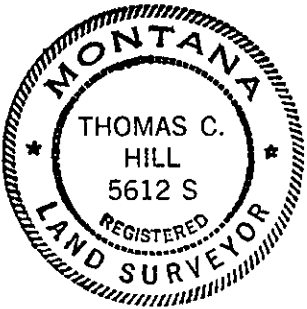
Date of work: 9/25/80

Painted red bands around bearing trees and attached bearing tree signs.

SKETCH, WITH COURSE AND DISTANCE TO ADJACENT CORNERS IF DETERMINED IN THIS SURVEY.
(MAY SKETCH OR PASTE REPRODUCTION ON REVERSE SIDE.)



Surveyor's Seal



I, Anthony J. Bachman
certify that the information shown herein is true and correct.

Anthony J. Bachman
Signature of Ground Party Chief

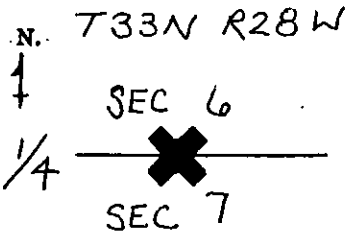
I, Thomas C. Hill
certify that I have carefully performed or reviewed the work done on the diagrammed corner as reported on this recordation form and approve the same.

Thomas C. Hill
Signature of Surveyor

5612-S

Registration Number

DIAGRAM OF CORNER:



✕ = Corner recorded on the sheet

Office of Clerk and Recorder, County of Lincoln
This "corner record" was filed for record on the 9th day of February, 1981, was noted on the cross-index plat and is assigned page No. 1006, in book No. 1

Edward L. Vaughan, Jr. Deputy Clerk
County Official

Cross Index No. E-3 T. 33N R. 28W Mer.

... .. to

... ..

... ..

... ..

... ..

... ..

... ..

... ..

...

X

(X)

X