

## INSTRUCTIONS

1. Original and/or subsequent record used to evaluate the corner position.
2. Description of evidence found, note discrepancies in the record, state method of establishing lost or obliterated corners.
3. Description of monument and accessories set to perpetuate the corner position.
4. Sketch or corner, show all pertinent data which can best be shown in a sketch example, corner marking, topography ties, position of accessories, etc.
5. Certification must be signed and sealed by Registered Land Surveyor in State of Montana.
6. Fill in Cross Index & Section Diagram at bottom of sheet.

## CERTIFIED CORNER RECORDATION

Corner C-W-E 1/64 Corner Sec. 27 T. 33N R. 27W P.M.M. Lincoln County

ORIGINAL G.L.O. NOTES: THIS CORNER WAS NEVER SET

Set 2½" X 30" Aluminum Monument with 3¼" cap.  
Marked as shown.

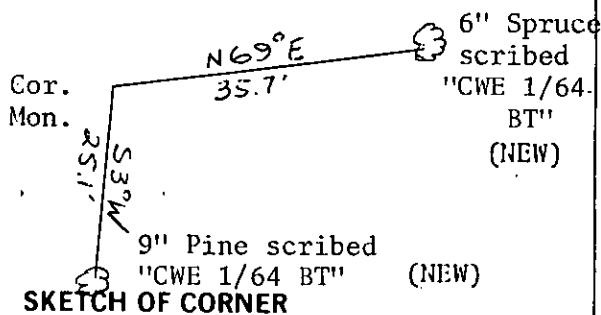
S 27

C-W-E  
1/64

2520S

1981

SEE CERTIFICATE OF SURVEY NO. 1007 FOR SECTION BREAKDOWN



## CERTIFICATION

I, EDWARD FOY

certify the information shown herein is true and correct.

*Edward Foy*  
Signature Ground Party Chief

I, M. L. HAIGES

certify that this Corner Record correctly represents work performed by me or under my direction in compliance with the "Corner Recordation Act" (70-22-10), et seq., M.C.A.)

*M. L. Haiges*  
Signature of Surveyor & Seal

Date: 12/1981 Reg. No. 2520S

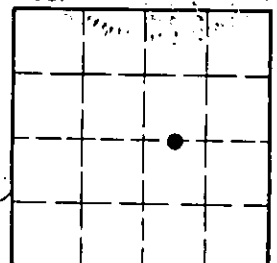
Employer: \_\_\_\_\_

Office of Clerk and Recorder, County of LINCOLN. This "corner record" was filed for record on the March 2<sup>nd</sup> day of 1982, was noted on the cross-index plat and is assigned page No. 1578, in book No. 1

*Eleanor L. Haugen by Betty L. Conner*  
County Official *deputy*

Cross Index No. T-15, 16 T. 33 R. 27 P.M.M.

Sec. 27



• - corner this sheet

