

INSTRUCTIONS

1. Original and/or subsequent record used to evaluate the corner position.
2. Description of evidence found, note discrepancies in the record, state method of establishing lost or obliterated corners.
3. Description of monument and accessories set to perpetuate the corner position.
4. Sketch or corner, show all pertinent data which can best be shown in a sketch example, corner marking, topography ties, position of accessories, etc.
5. Certification must be signed and sealed by Registered Land Surveyor in State of Montana.
6. Fill in Cross Index & Section Diagram at bottom of sheet.

CERTIFIED CORNER RECORDATION

Corner: NE-SW 1/64 Corner Sec. 27 T. 33N R. 27W P.M.M. Lincoln County

ORIGINAL G.I.L.O. NOTES: THIS CORNER WAS NEVER SET

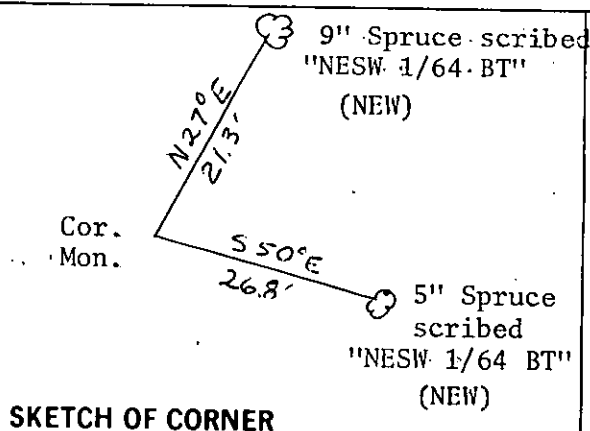
Set 2½" X 30" Aluminum Monument with ¾" cap.
Marked as shown:

S 27

NE-SW
1/64

1981
2520S

SEE CERTIFICATE OF SURVEY NO. 1007 FOR SECTION BREAKDOWN



SKETCH OF CORNER

CERTIFICATION

EDWARD FOY

certify the information shown herein is true and correct.

Edward Foy
Signature Ground Party Chief

M. L. HAIGES

certify that this Corner Record correctly represents work performed by me or under my direction in compliance with the "Corner Recordation Act" (70-27104, et seq., M.C.A.)

M. L. Haiges
Signature of Surveyor & Seal

Date: 12/1981 Reg. No. 2520S

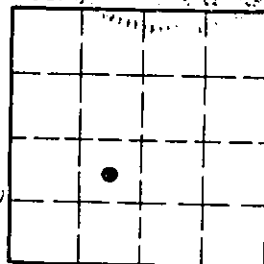
Employer:

Office of Clerk and Recorder, County of LINCOLN. This "corner record" was filed for record on the March 2nd day of 1982 was noted on the cross-index plat and is assigned page No. 1574, in book No. 1

Eleanor Laughlin by Betty L. Conner
County Official deputy

Cross Index No. TU-14,15 T. 33 R. 27 PMM

Sec. 27



• corner this sheet

THE UNITED STATES OF AMERICA
DO hereby certify that
[illegible text]

[illegible text]

[illegible text]

OFF