

## INSTRUCTIONS

1. Original and/or subsequent record used to evaluate the corner position.
2. Description of evidence found, note discrepancies in the record, state method of establishing lost or obliterated corners.
3. Description of monument and accessories set to perpetuate the corner position.
4. Sketch of corner, show all pertinent data which can best be shown in a sketch example, corner marking, topography ties, position of accessories, etc.
5. Certification must be signed and sealed by Land Surveyor registered in the State of Montana.
6. Fill in Cross Index & Section Diagram at bottom of sheet.

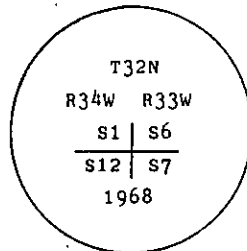
## CERTIFIED CORNER RECORDATION

Corner SE Sec. 1, Cor. of Sec. 1 T. 32 N. R. 34 W. P.M.M. Lincoln County

I. 1903 G.L.O. original record by A. B. BENEDICT: Set a limestone and 4 bearing trees referenced below.

1968 B.L.M. remonumentation record by J. E. FRENCH: The corner of secs. 1, 6, 7 and 12, monumented with a limestone, 15x12x6 ins., firmly set in the ground, mkd. with 5 notches on the S. and 1 notches on the N. edges, and witnessed by the remains of the original bearing trees.

At the corner point, set an iron post, 30 ins. long, 2 1/2 ins. diam., 24 ins. in the ground, with brass cap mkd. as shown:



Established three new bearing trees referenced below:

Bury the original stone alongside the iron post.

II. Found a 2 1/2 in. diam. iron pipe, 8 ins. above ground, firmly set in mound of stone, with B.L.M. brass cap mkd. as shown above, from which:

No evidence found of orig. G.L.O. bearing tree at N37°E, 47 lks. dist.

A fir, 10 ins. diam., bears N78°E, 28.9 ft. dist., healed face. (B.L.M.- record)

A larch, 9 ins. diam., bears S39°E, 38.1 ft. dist., healed face. (B.L.M.- record: S43°E)

No evidence found of orig. G.L.O. bearing tree at S35 1/4°E, 79 lks. dist.

A larch snag, 24 ins. diam., bears S43°W, 78.0 ft. dist., visible scribing. (G.L.O.- record: S40 3/4°W, 76.5 ft.)

A fir, 20 ins. diam., bears N78°W, 42.0 ft. dist., healed face. (B.L.M.- record: N60°W, 40.3 ft.)

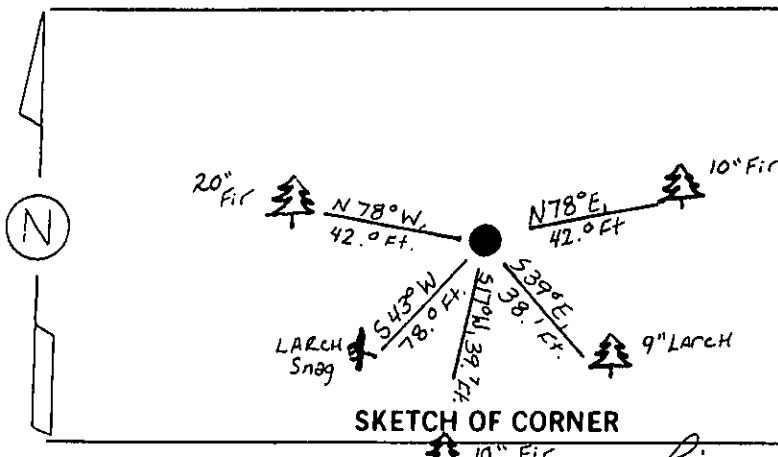
No evidence of orig. G.L.O. bearing tree at N50 1/2°W, 22 lks. distant.

III. Established one new bearing tree:

A fir, 10 ins. diam., bears S17°W, 39.7 ft. dist., mkd. T32N R34W S12 BT.

Painted a red band around bearing trees and attached Land Survey Monument and Bearing Tree signs.

Magnetic Declination: 20° East.



SKETCH OF CORNER

## CERTIFICATION

1. Thomas M. Hommel

certify the information shown herein is true and correct.

Thomas M. Hommel  
Signature Ground Party Chief

1. Alvah F. Hughes

certify that this Corner Record correctly represents work performed by me or under my direction in compliance with the "Corner Recordation Act" (70-22-101, et seq., M.C.A.)

Alvah F. Hughes  
Signature of Surveyor & Seal 322 L.S.

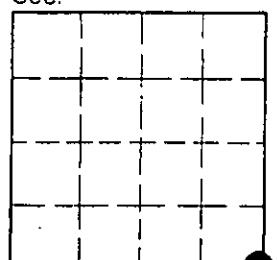
Date: 12/15/94 Reg. No. 7322LS

Employer: U.S. FOREST SERVICE

Office of Clerk and Recorder, County of Lincoln. This "corner record" was filed for record on April 27, 1995 was noted on the cross-index plat and is assigned page No. 7023, in book No. \_\_\_\_\_

Carol M. Cunningham  
County Official

Sec. 1



• - corner this sheet

Cross Index No. E-25 T. 32N R. 34W P.M.M.

