

INSTRUCTIONS

1. Original and/or subsequent record used to evaluate the corner position.
2. Description of evidence found, note discrepancies in the record, state method of establishing lost or obliterated corners.
3. Description of monument and accessories set to perpetuate the corner position.
4. Sketch or corner, show all pertinent data which can best be shown in a sketch example, corner marking, topography ties, position of accessories, etc.
5. Certification must be signed and sealed by Registered Land Surveyor in State of Montana.
6. Fill in Cross Index & Section Diagram at bottom of sheet.

CERTIFIED CORNER RECORDATION

Corner East $\frac{1}{4}$ Corner Section 2 T. 32 N R. 34 W P.M.M. Lincoln County

1. 1903 GLO Record: Set a sandstone 18"x8"x6", 12" in the ground, for $\frac{1}{4}$ corner marked $\frac{1}{4}$ on West face.

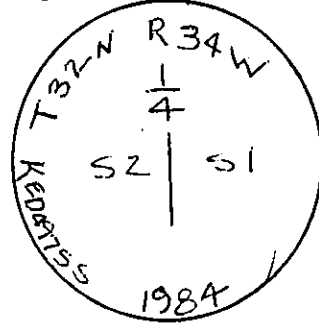
From which:

A tamarack, 8ins. diam., bears S.42°30'E., 19 lks. marked $\frac{1}{4}$ S1 BT.
A larch, 24ins. diam., bears S.89°30'W., 11 lks. mkd. $\frac{1}{4}$ S2 BT.

11. I found a loose stone mkd. $\frac{1}{4}$ on West face and a stump with butt cut log piece with scribing visible, bearing S.90°W., 11 lks. and a root crown with attached dead snag with scribing clearly visible bearing S.42°E., 19 lks.

At the corner point:

Set an aluminum post 24ins. long, 2 $\frac{1}{2}$ in. diam., 20ins. in ground with aluminum cap mkd.

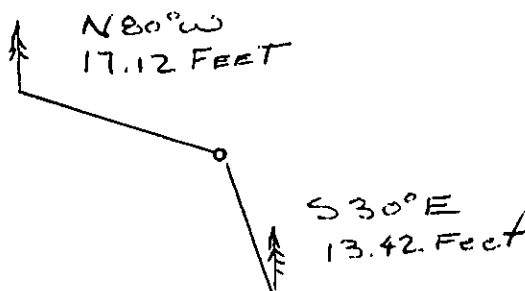
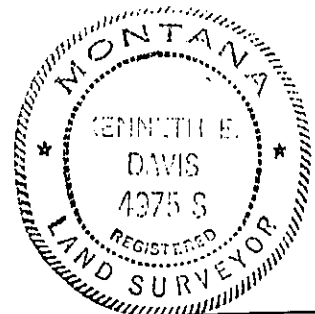


The new bearing trees:

A white fir, 9ins. diam., bears N.82°W., 17.12 ft. mkd. $\frac{1}{4}$ S2 BT.
A white fir, 8ins. diam., bears S.30°E., 13.42 ft. mkd. $\frac{1}{4}$ S1 BT.

All bearing trees have a 6in. red band around tree and BT. signs; front #54-2 and 54-9 sign both front and back side.

111. I set a 6 ft. steel post 1.40 ft. N. of corner with survey monument sign attached, and buried the original stone alongside aluminum post.



SKETCH OF CORNER

CERTIFICATION

I, Tom Davis
certify the information shown herein to be true and correct.

Tom Davis
Signature Ground Party Chief

I, KEN E DAVIS
certify that this Corner Record correctly represents work performed by me or under by direction in compliance with the "Corner Recordation Act" (70-22-101, et seq., M.C.A.)

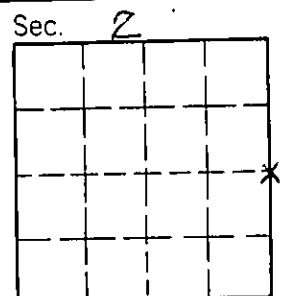
Ken E Davis
Signature of Surveyor & Seal

Date: 1984 Reg. No. 4975 S

Employer: _____

Office of Clerk and Recorder, County of Lincoln. This "corner record" was filed for record on the December 12 day of 1984, was noted on the cross-index plat and is assigned page No. 2836, in book No. _____

James B. F. Sigel by Karen L. Ham et al
County Official deputy



Cross Index No. S. 2 T. 32 R. 34 P.M.M.

• - corner this sheet

