

INSTRUCTIONS

1. Original and/or subsequent record used to evaluate the corner position.
2. Description of evidence found, note discrepancies in the record, state method of establishing lost or obliterated corners.
3. Description of monument and accessories set to perpetuate the corner position.
4. Sketch of corner, show all pertinent data which can best be shown in a sketch example, corner marking, topography ties, position of accessories, etc.
5. Certification must be signed and sealed by Land Surveyor registered in the State of Montana.
6. Fill in Cross Index & Section Diagram at bottom of sheet.

CERTIFIED CORNER RECORDATION

Corner $\frac{1}{4}$ $\frac{10}{15}$ T. 32N R. R34W P.M.M. Lincoln County

- I. 1903 GLO Record: Set a limestone, 20x9x6ins., 15ins. in the ground, for $\frac{1}{4}$ sec.cor., mkd. $\frac{1}{4}$ on N. face.

from which:

A tamarack, 15ins. diam., bears N.46°E., 17 lks. dist., mkd. $\frac{1}{4}$ S10 BT.
A fir, 16ins. diam., bears S.61°W., 13 lks. dist., mkd. $\frac{1}{4}$ S15 BT.

1967 BLM Remonumentation: The $\frac{1}{4}$ cor. of secs. 10 and 15, monumented with a limestone, 20x9x6ins., loosley set, mkd. $\frac{1}{4}$ on the N. face, and witnessed by the remains of the original bearing trees.

At the corner point:

Set an iron post, 30ins. long, 2 $\frac{1}{2}$ in. diam., 24ins. in the ground, with brass cap mkd.



from which the original bearing trees:

A tamarack stump, 20ins. diam., bears N.46°E., 17lks. dist., no visible marks. (Record)
A fir stump, 21ins. diam., bears S.61°W., 13 lks. dist., mkd. $\frac{1}{4}$ (Record)

The new bearing trees:

A fir, 14ins. diam., bears S.36 $\frac{1}{2}$ °W., 58 lks. dist., mkd. $\frac{1}{4}$ S15 BT.
A larch, 6in. diam., bears N.49°W., 17 lks. dist., mkd. $\frac{1}{4}$ S10 BT.

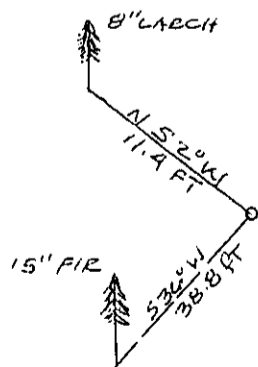
Bury the original stone alongside iron post.

- II. I find a BLM brass cap marked as shown above.

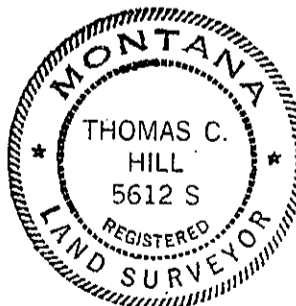
from which:

A larch, 8ins. diam., bears N.52°W., 11.4 ft. dist., healed face.
A fir, 15in. diam., bears S.36°W., 38.8 ft. dist., scribing visible.

- III. I set a 6 ft. carsonite post 1 ft. n. of corner, painted red bands around all BT's and attached new BT signs.



SKETCH OF CORNER



CERTIFICATION

I, Thomas Hommel
certify the information shown herein is true and correct.

Thomas M. Hommel
Signature Ground Party Chief

I, Thomas C. Hill
certify that this Corner Record correctly represents work performed by me or under my direction in compliance with the "Corner Recordation Act" (70-22-101, et seq., M.C.A.)

Thomas C. Hill
Signature of Surveyor & Seal

Date 6/28/84 Reg. No. 5612S

Employer: USFS

Office of Clerk and Recorder, County of Lincoln. This "corner record" was filed for record on July 12, 1984

was noted on the cross-index plat and is assigned page No. 2703, in

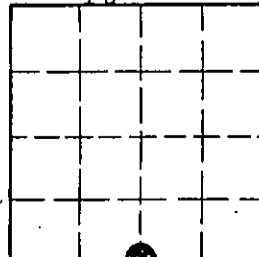
book No. _____

Janet B. Siegel by Thomas C. Hill
County Official Deputy

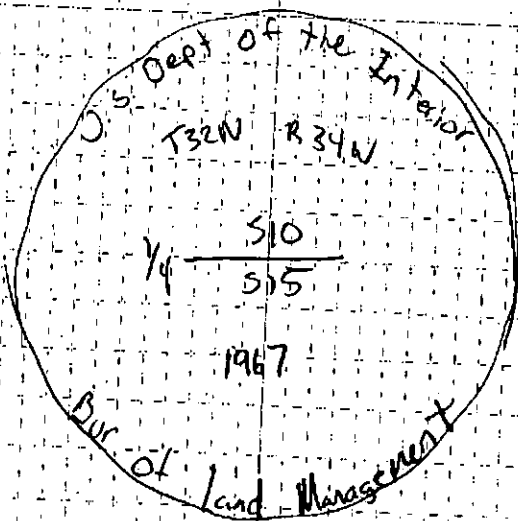
Cross Index No. _____ T. 32N R. 34W P.M.M.

Adopted July 1, 1981, Montana Board of Professional Engineers & Land Surveyors

Sec. 10



• - corner this sheet



13" DBH Larch
NVS

N 100° W
11.5 ft

3 1/4 Brass Can

S 160° W
5.5 ft

20" DBH Douglas Fir
NVS

