

1. Original and/or subsequent record used to evaluate the corner position.
2. Description of evidence found, note discrepancies in the record, state method of establishing lost or obliterated corners.
3. Description of monument and accessories set to perpetuate the corner position.
4. Sketch of corner, show all pertinent data which can best be shown in a sketch example, corner marking, topography ties, position of accessories.
5. Certification must be signed and sealed by Land Surveyor registered in the State of Montana.
6. Fill in Cross Index & Section Diagram at bottom of sheet.

CERTIFIED CORNER RECORDATIONCorner: 1/16th Corner; Secs. 35&2 T.31 & 32N. R. 34W. P.M.M. Lincoln County

1983 Record:

(Ninneman, 4661 S) Certified corner recordation by Jack H. Ninneman No. 4661-S, on file in the Lincoln County Courthouse, dated April 7, 1983.

1988 Record:

(Hughes, 7322 LS) Found a 5/8 ins. dia. rebar, firmly set, no cap, by JHN 4661-S in 1983 from which.

A fir, 14 ins. dia., bears S5°30'E, 35.8 ft., with illegible scribing.

A fir stump, 11 ins. dia., 3ft high, bears N53°30'W, 32.6 ft., with illegible scribing.

An unmarked and unrecorded rebar, 5/8 ins. dia., bears S46°41'W, 6.89 ft.

Remonumented the JHN rebar with a 3/4 ins. dia. by 30 ins. long aluminum rod with a 3-1/4 ins. dia. aluminum cap, 26 ins. in the ground.

Established one new bearing tree:

A pine, 8 ins. dia., bears N56°E, 20.8 ft., marked "X BT"

2010 Found:

We find a 3-1/4 ins. aluminum cap on 3/4 ins. dia. aluminum shaft in small mound of stone marked as shown below from which:

A Ponderosa pine, 18 ins. dia., bears N50°E, 21.3 ft., with an overgrown heel blaze.

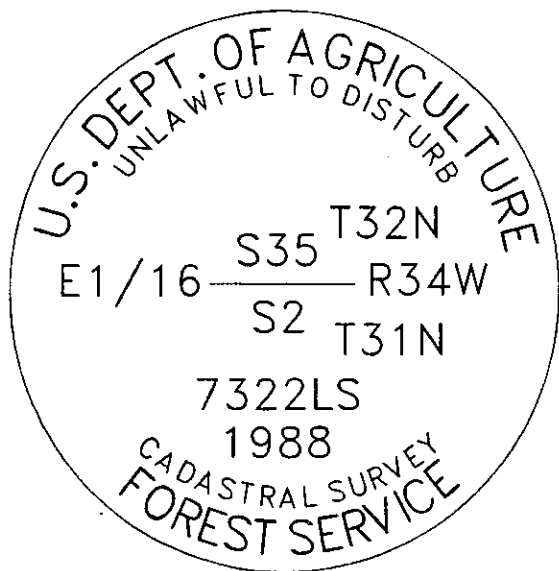
A fir, 21 ins. dia., bears S2°E, 36.2 ft., with an overgrown heel blaze.

2010 Perpetuation:

Bearing trees affixed with BT tags, LSM signs, snow blazed and painted red bands.

Steel spikes driven into BT's, side center at point of measurement.

We set two galvanized steel post West, 2.7 ft and East 1.1 ft. from monument with LSM and USFS boundary decals.

**SKETCH OF CORNER****CERTIFICATION**I, Travis Williams
certify the information shown herein is true and correct

Signature Ground Party Chief

I, Ken E Jenkins

certify that this Corner Record correctly represents work performed by me or under my direction in compliance with the "Corner Recordation Act" (70-22-101, et seq., M.C.A.)

Signature of Surveyor & Seal

Date: 12/2010 Reg. No. 9330 LSEmployer: Montana Northwest CompanyP.O. Box 8777, Missoula, MT 59807406-721-4033 Project No.1617-10

Sec. 35

Office of Clerk and Recorder, County of _____ This "corner

record" was filed for record 231896 BOOK: CCR CC&R'S PAGE: 11839 Pages: 1

was noted on the cross-index STATE OF MONTANA LINCOLN COUNTY

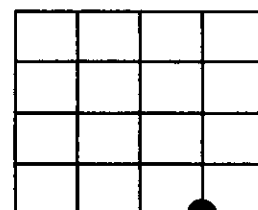
book No. _____ TAMMY D. LAUER CLERK AND RECORDER

FEE: \$0.00

BY: Joanne Davis Deputy

TO: MONTANA NORTHWEST COMPANY P.O. BOX 8777, MISSOULA, MONTANA

County Official

Cross Index No. Z-20 T. 32N R. 34W PMM

● - Corner this sheet