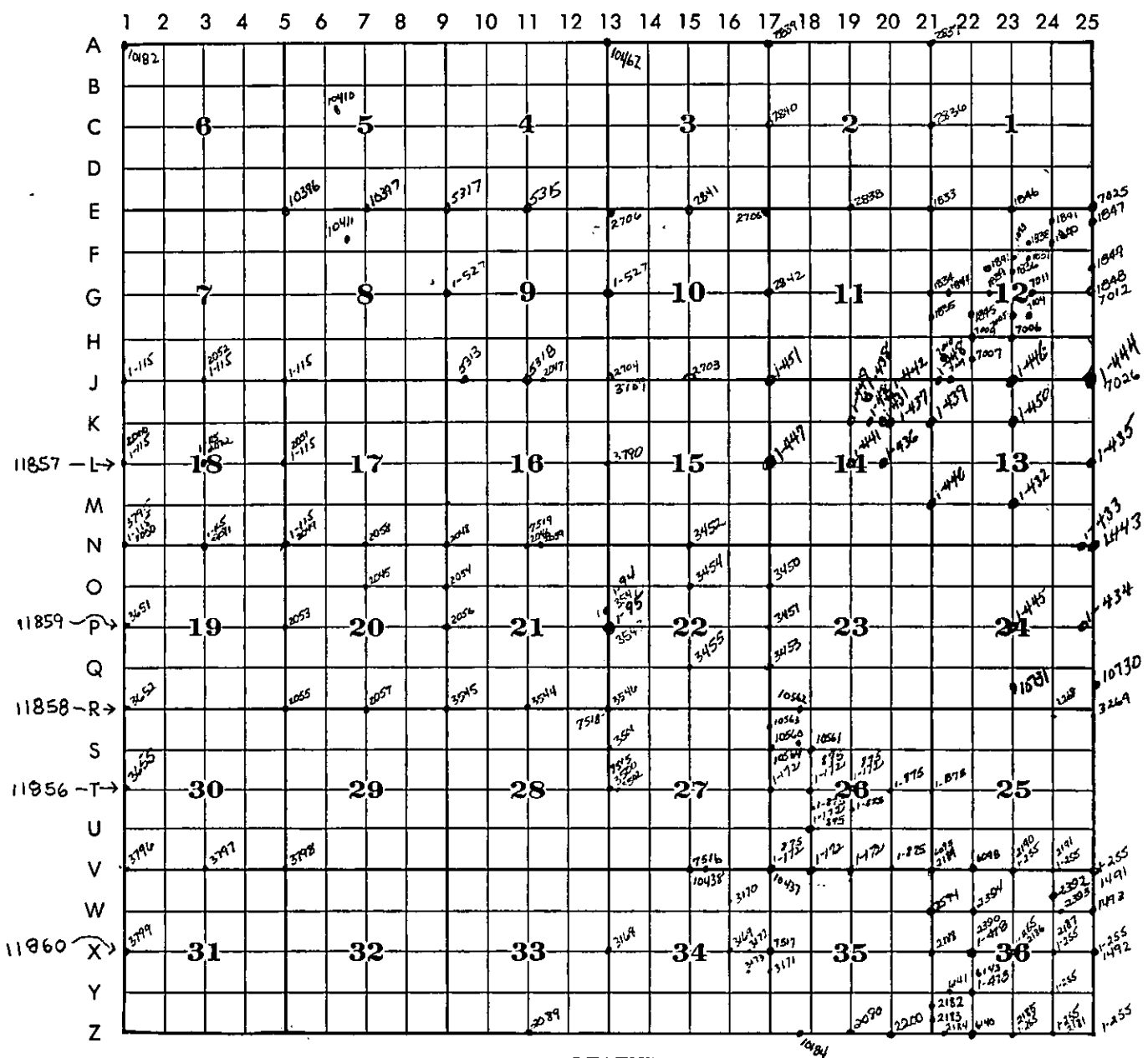


# CROSS INDEX PLAT

T. 32 R. 34 MER.



## LEGEND



Corners filed under this cross index plat.



Certificates filed in adjoining township as indicated by solid quadrant(s).

Each corner certificate is identified by an alphabetical-numerical coordinate number which is derived from the system shown on the township diagram. For example, the quarter-corner between Section 5 and 6 is identified as Corner C-5.

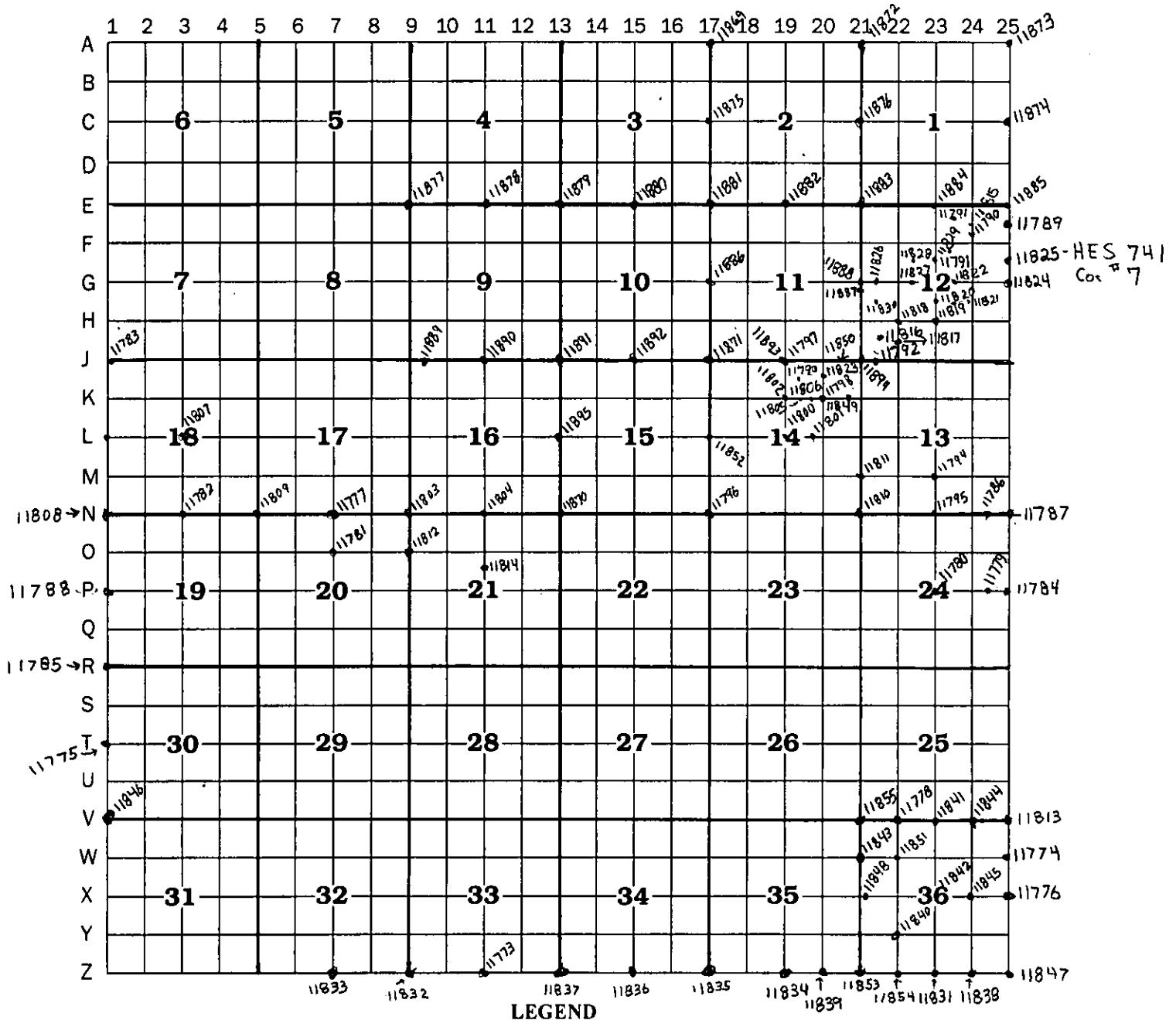
Corners such as meander corners or subdivision corners which are not located at intersecting lines on the above diagram will be identified by reference to the nearest applicable coordinate lines, thus:  
AB-1; M-1-2; VW-19-20.

Corners common to adjoining townships will be identified by coordinates of the townships in which the certificates are to be filed.

Within each township record, the certificates will be filed in alphabetical-numerical sequence.

# CROSS INDEX PLAT

T. 32 R. 34 MER.



Each corner certificate is identified by an alphabetical-numerical coordinate number which is derived from the system shown on the township diagram. For example, the quarter-corner between Section 5 and 6 is identified as Corner C-5.

Corners such as meander corners or subdivision corners which are not located at intersecting lines on the above diagram will be identified by reference to the nearest applicable coordinate line, thus:  
AB-1; M-1-2; VW-19-20.

Corners common to adjoining townships will be identified by coordinates of the townships in which the certificates are to be filed.

Within each township record, the certificates will be filed in alphabetical-numerical sequence.

T. 32 R. 34 MER.

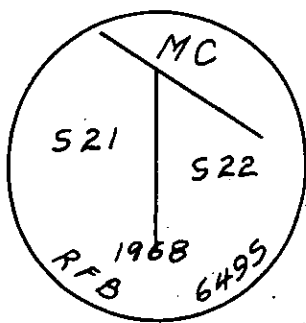
# CERTIFIED LAND CORNER RECORDATION

(REFERENCE FSH 5681.65)

## DESCRIPTION OF CORNER EVIDENCE FOUND, AND ORIGINAL RECORD (IF KNOWN)

Found underground remains of 5" square post from which scribed P. Pine stump, 3' high by 12" diameter bears S 55° W, 94 links; and green Cedar, 24" diameter, bears S 52° E, 76 links; both BT's at record locations. Cedar BT scar not opened. The record describes a marked stone buried 24"; this was searched for and not found.

## DESCRIPTION OF MONUMENT AND ACCESSORIES ESTABLISHED TO PERPETUATE THE ORIGINAL LOCATION OF THIS CORNER:

Date of work: 3-21-1968

Set a 2" x 30" pipe two feet deep with brass cap in exact position of original stake, brass cap stamped as shown, from which: A Cedar, 10", bears S 73° W, 32 links, scribed STR - MC.

SKETCH, WITH COURSE AND DISTANCE TO ADJACENT CORNERS IF DETERMINED IN THIS SURVEY.  
(MAY SKETCH OR PASTE REPRODUCTION ON REVERSE SIDE.)

Surveyor's Seal

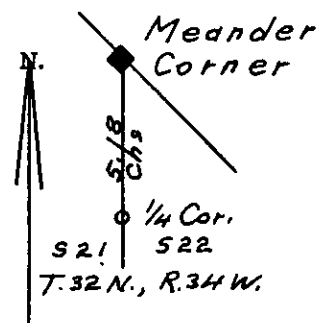
I, \_\_\_\_\_  
certify that the information shown herein is true and correct.

Signature of Ground Party Chief

I, ROBERT F. BURDICK  
certify that I have carefully performed or reviewed the work done on the diagrammed corner as reported on this recordation form and approve the same.

Robert F. Burdick  
Signature of Surveyor

### DIAGRAM OF CORNER:



◆ = Corner recorded on the sheet

649S

Registration Number

Office of Clerk and Recorder, County of Lincoln

This "corner record" was filed for record on the 10th. day of April 1968, was noted on the cross-index plat and is assigned page No. 94, in book No. 1

ELEANOR L. VAUGHN, By: Mae Watson,  
County Official Deputy.

Cross Index No. P-13 T. 32 R. 34 Mer.